

Analytical Report

Sample ID	2359	-	Analysis Service - A1068
Expected	17beta-estradiol		
Sample adulterated or impure?	No		
Sample Appearance			
Sample type	#N/A	-	
Date of sample receipt	06-Feb-2025		
Date of analysis	11-Feb-2025		
Date of Report	12-Feb-2025		

Qualitative and Quantitative Results

Substances identified

	Harm Reduction information	Chemical Class	Pubchem ID	Analytical techniques used
17-beta-estradiol 91% Moisture (water)	https://psychonautwiki.org/wiki/17-beta-estradiol	Hormone	N/A	FTIR/LCMS/NMR

* uncertainty of measurement +/- 5 %
Unless stated otherwise elsewhere

The Analysis Report is not a warranty or advertisement for the quality of any supplier or product!
We do not claim nor make any guarantees or recommendations regarding the safety of the analysed samples for human consumption.

Kykeon Analytics Ltd. assumes no liability for the results or for any damages that may arise from the use of the Analysis Report. The Analysis Report is not to be used for defence purposes in any type of proceeding without the explicit consent of KYKEON, its contents shall not be disclosed to any third party for marketing purposes. The Analysis Report shall not be altered, modified, amended, falsified, forged or changed in any way.



Detailed information regarding our workflow including a full description of the analytical methods applied

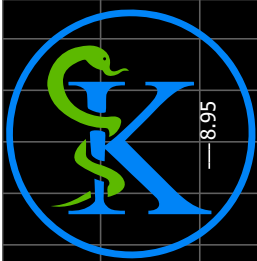
is freely available under <https://www.kykeonanalytics.com/services/users/>

Attachments:

-
-

End of Analytical Report

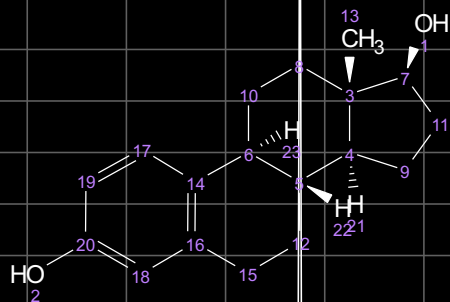
Kykeon Analytics Ltd. - Apartado de correos 11, 08500 Vic, Spain - CIF: W02581898C - office@kykeonanalytics.com



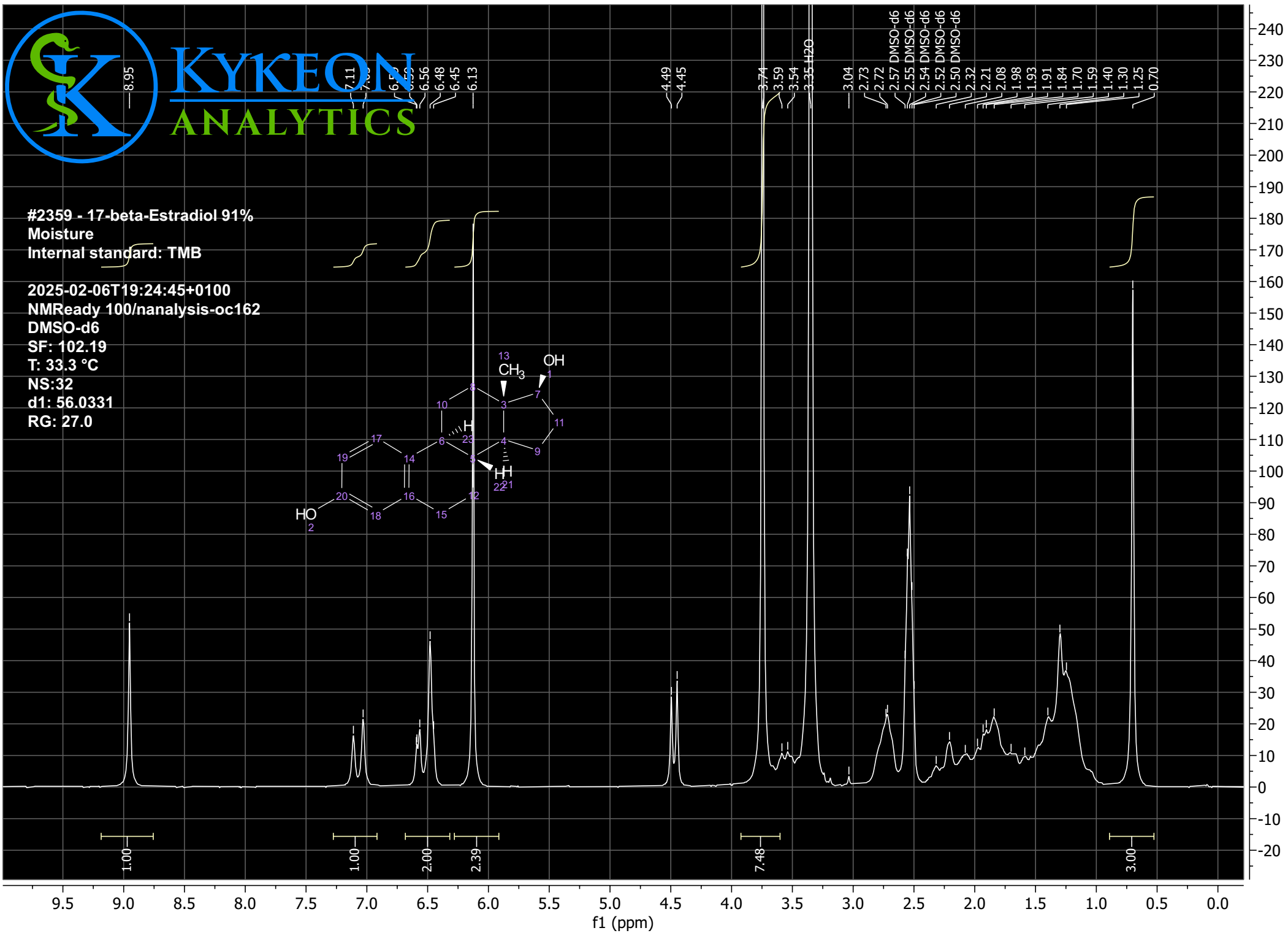
KYKEON
ANALYTICS

#2359 - 17-beta-Estradiol 91%
Moisture
Internal standard: TMB

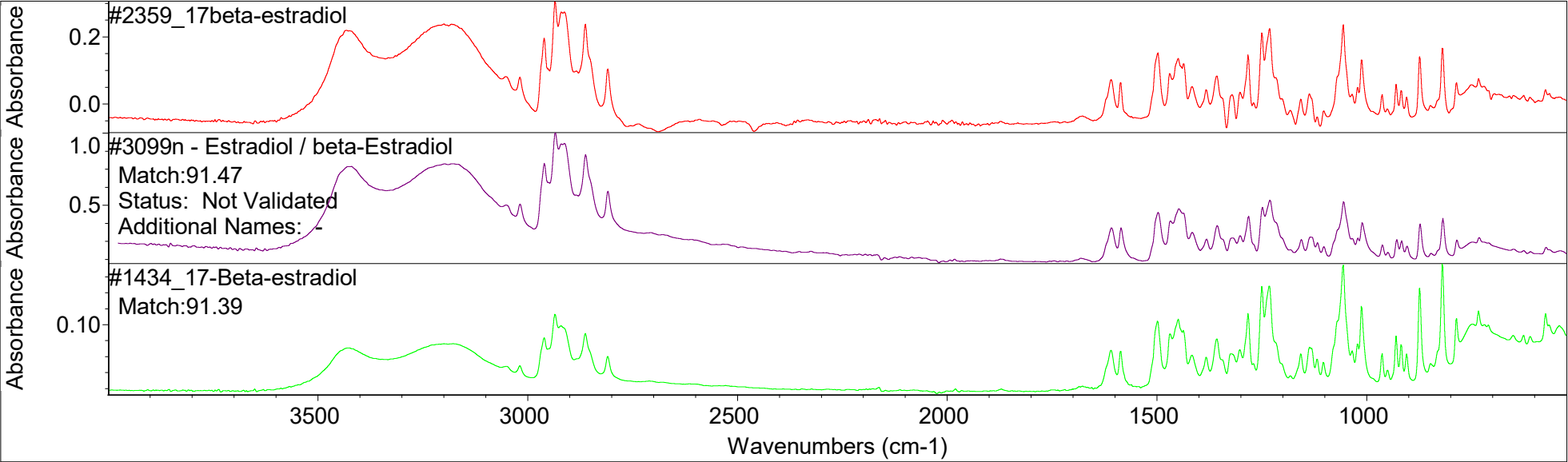
2025-02-06T19:24:45+0100
NMReady 100/nanalysis-oc162
DMSO-d6
SF: 102.19
T: 33.3 °C
NS:32
d1: 56.0331
RG: 27.0



8.95, 7.11, 7.03, 6.55, 6.52, 6.56, 6.48, 6.45, 6.13, 4.49, 4.45, 3.74, 3.59, 3.54, 3.35, 3.20, 3.04, 2.73, 2.72, 2.57 DMSO-d6, 2.55 DMSO-d6, 2.54 DMSO-d6, 2.52 DMSO-d6, 2.50 DMSO-d6, 2.32, 2.21, 2.08, 1.98, 1.93, 1.91, 1.84, 1.70, 1.59, 1.40, 1.30, 1.25, 0.70



Search results for: #2359_17beta-estradiol
Date: Wed Feb 12 15:41:02 2025 (GMT+01:00)
Search algorithm: Correlation
Regions searched: 3495.26-700.00



Search results list of matches

	Index	Match	Compound Name	Library Name
1	730	91.47	#3099n - Estradiol / beta-Estradiol	ENFSI DWG Drugs Subset A
2	280	91.39	#1434_17-Beta-estradiol	Kykeon Analytics November 2024