

Analytical Report

Sample ID	2202	-	Analysis Service - A0951
Expected	Estradiol		
Sample adulterated or impure?	No		
Sample Appearance			
Sample type	#N/A	-	
Date of sample receipt	14-Jan-2025		
Date of analysis	15-Jan-2025		
Date of Report	16-Jan-2025		

Qualitative and Quantitative Results

Substances identified

	Harm Reduction information	Chemical Class	Pubchem ID	Analytical techniques used
Estradiol 7mg/ml	*			
Other solvents/excipients	https://psychonautwiki.org/wiki/Estradiol	Hormone	5757	LCMS/NMR

* uncertainty of measurement +/- 5 %
Unless stated otherwise elsewhere

The Analysis Report is not a warranty or advertisement for the quality of any supplier or product!
We do not claim nor make any guarantees or recommendations regarding the safety of the analysed samples for human consumption.

Kykeon Analytics Ltd. assumes no liability for the results or for any damages that may arise from the use of the Analysis Report. The Analysis Report is not to be used for defence purposes in any type of proceeding without the explicit consent of KYKEON, its contents shall not be disclosed to any third party for marketing purposes. The Analysis Report shall not be altered, modified, amended, falsified, forged or changed in any way.



Detailed information regarding our workflow including a full description of the analytical methods applied

is freely available under <https://www.kykeonanalytics.com/services/users/>

Attachments:

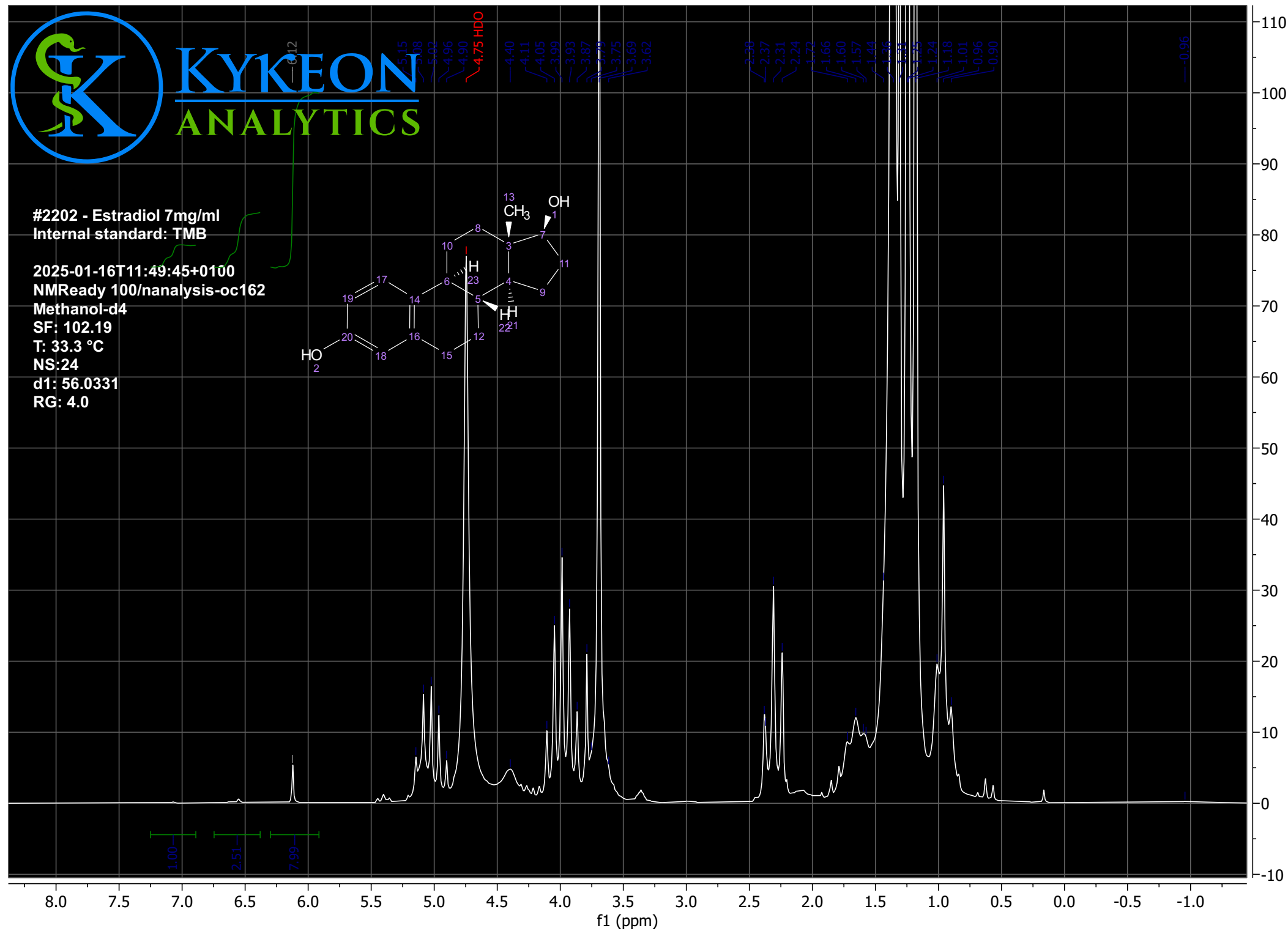
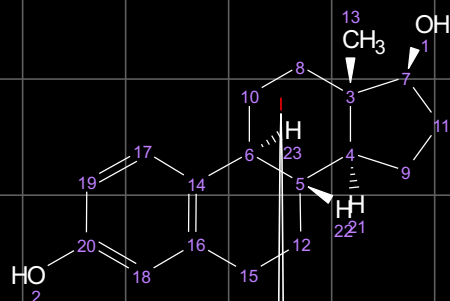
-
-

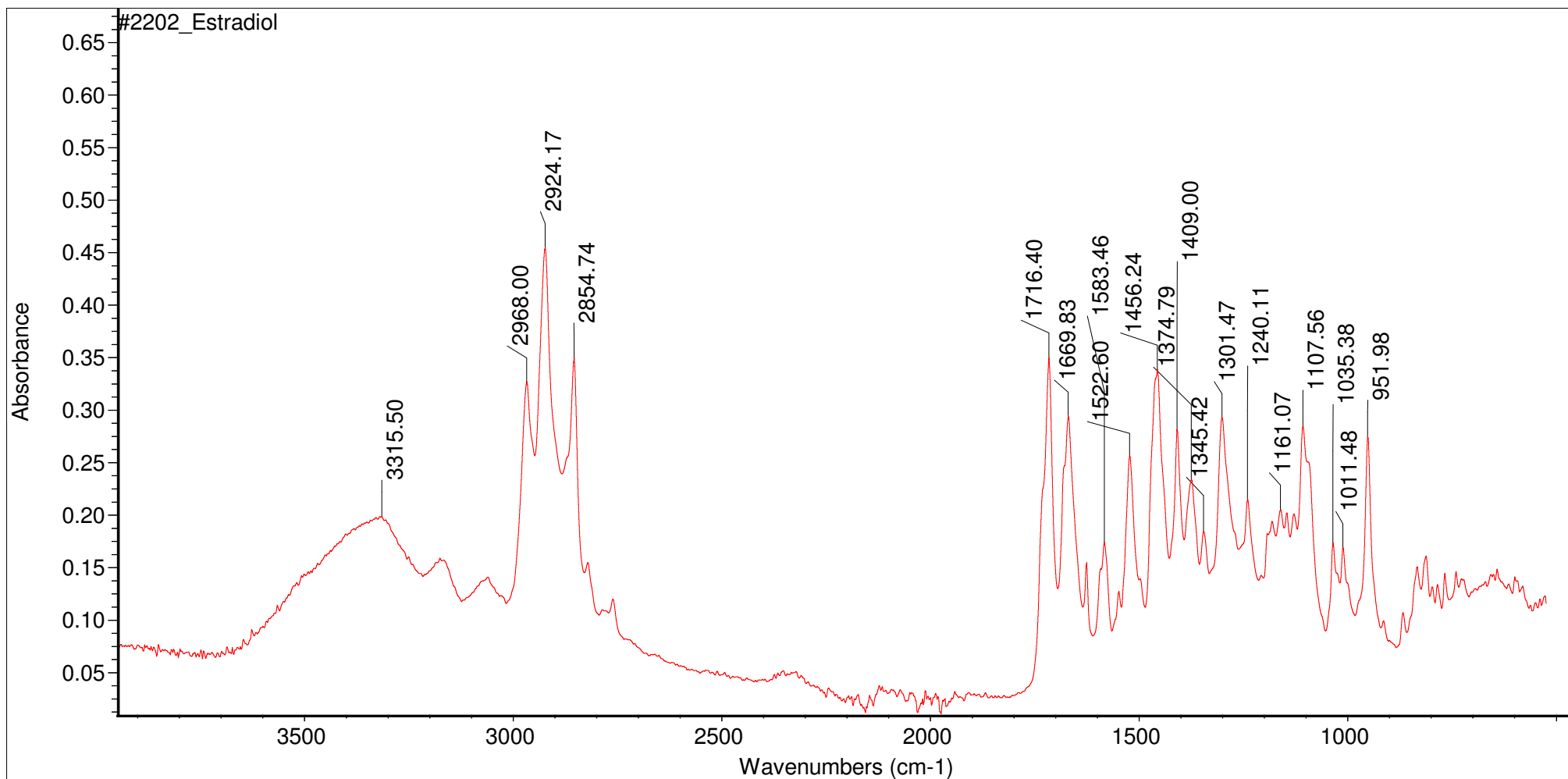


KYKEON
ANALYTICS

#2202 - Estradiol 7mg/ml
Internal standard: TMB

2025-01-16T11:49:45+0100
NMReady 100/nanalysis-oc162
Methanol-d4
SF: 102.19
T: 33.3 °C
NS:24
d1: 56.0331
RG: 4.0





Tue Jan 14 14:46:49 2025 (GMT+01:00)

FIND PEAKS:

Spectrum: #2202_Estradiol

Region: 3949.50 455.12

Absolute threshold: 0.164

Sensitivity: 50

Peak list:

Position:	951.98	Intensity:	0.277
Position:	1011.48	Intensity:	0.170
Position:	1035.38	Intensity:	0.174
Position:	1107.56	Intensity:	0.285
Position:	1161.07	Intensity:	0.205
Position:	1240.11	Intensity:	0.216
Position:	1301.47	Intensity:	0.294

Position:	1345.42	Intensity:	0.185
Position:	1374.79	Intensity:	0.234
Position:	1409.00	Intensity:	0.283
Position:	1456.24	Intensity:	0.340
Position:	1522.60	Intensity:	0.257
Position:	1583.46	Intensity:	0.174
Position:	1669.83	Intensity:	0.295
Position:	1716.40	Intensity:	0.351
Position:	2854.74	Intensity:	0.350
Position:	2924.17	Intensity:	0.455
Position:	2968.00	Intensity:	0.327
Position:	3315.50	Intensity:	0.199