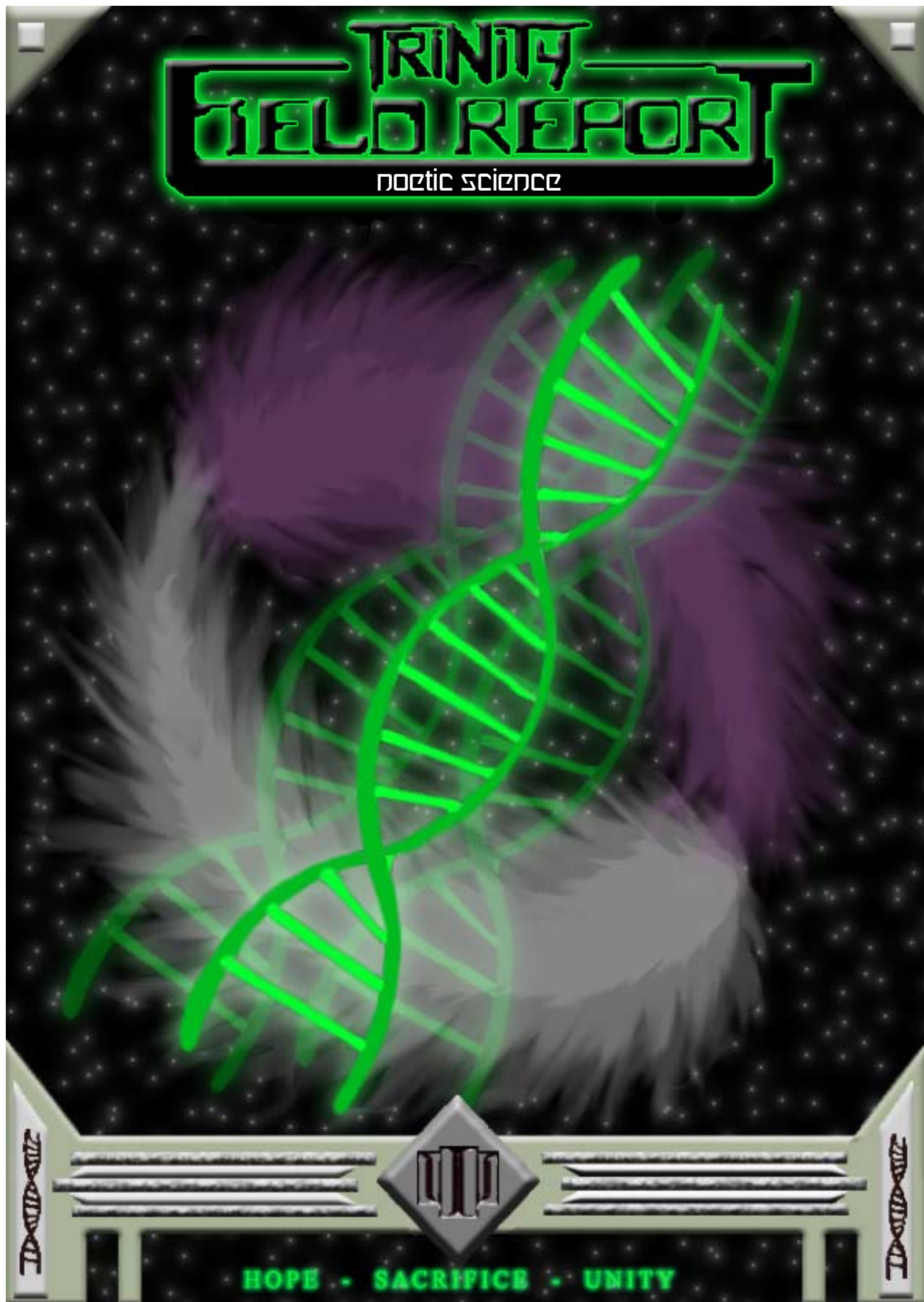




TRINITY FIELD REPORT

noetic science



HOPE • SACRIFICE • UNITY



Credits

Developer:

Reg 'Knave' Stuart

Writers:

Reg 'Knave' Stuart, Peter 'Pax's Pimp' Goyhenetche,
Holli 'Harlequin' Raan, Dan 'Jackson Creed' Hamilton

Art:

Holli 'Harlequin' Raan, Peter 'Pax's Pimp' Goyhenetche,
David 'Flashmaster' Watts, Petter 'Pythagore' Martensson

Cover Art:

Holli 'Harlequin' Raan

Producer/Graphics:

Chris 'CHILL' Hill



<http://www.chill.uk.net/eon>

Legal Notice

Various terms used throughout this book are copyright White Wolf Publishing Inc. This publication is purely fan fiction, it is in no way associated with or recognised by White Wolf Publishing Inc. In short, this book is completely unofficial, please take it as that.

In order to use the contents of this book you will need to have purchased several of the official books available from White Wolf Publishing at <http://www.white-wolf.com>, support the Trinity Universe by either visiting White Wolf's website or your local gaming store to purchase the official books.

This book in its entirety has been developed to be freely available to fans of White Wolf's Trinity Universe – the most recent copy of this book can be downloaded for free from EON at <http://www.chill.uk.net/eon>

The mention of or reference to any company or product in these pages is not a challenge to the trademark or copyright concerned. This book uses science fiction for settings, characters and themes. All science fiction, geopolitical scenarios and psi-related elements are fiction and intended for entertainment purposes only. Reader discretion is advised.



TRINITY FIELD REPORT

noetic science

| | |
|-------------|----|
| THEORETICAL | 4 |
| PSI | 13 |
| TAINT | 24 |
| THE FUTURE | 32 |

GREETINGS COLLEAGUE -

Welcome to the world of Noetics – a Science that has been in existence for a mere twenty years, but that has and still helps to solve the mysteries and provide answers to the Great Questions of the Universe! Despite the tragic loss of knowledge that was the unavoidable result of the fall of the quantakinetic Chitra Bhanu, Aeon and the Orders have made remarkable progress in this new field – for the betterment of all humanity.

As I'm sure you know, the study of Noetics was spearheaded by the proxies Sarah Bhurano and Mathieu Zwiendler. Their early findings helped to explain the natural phenomenon that is Psionic Evolution – which greatly helped the citizens of this world to accept the Orders as their protectors. Aeon was involved in much of this early research and, still to this day, assists with and co-ordinates much of the leading Noetic Science work.

Naturally, when the Orders revealed themselves, a flood of new questions were asked relating to the subquantum universe and to its interaction with life as we know it. The most obvious and most common of these questions was simply, "What is the difference between Psions and aberrants?" In our fear we wanted to know if Humanity's new defenders would turn on us like the aberrants had. Would these unique individuals fall prey to the same destructive madness? As we learned more we came to realize the true nature of Psi, and that Psions themselves are not susceptible to the Taint Sickness that afflicts the aberrants. Over time that knowledge has become established fact. What is not commonly known is how Psi truly functions – where it fits into the grand science of all things – and perhaps most importantly, how Psions are able to influence this strange 'building block of life'.

In this document you will learn about the quintessential differences between Psi and Taint, and exactly how the Psions manipulate the very world around us. The Aeon Trinity has developed this report in order to help prepare you for the situations you will encounter in the field; whether it is perfecting your usage of your Psionic Aptitudes, dealing with an aberrant threat, or even discovering a new property of Psi itself.

I hope that you will read this document carefully and review it in the future as you carry on your service to Humanity and to the Trinity. Over time we may unlock all the secrets of the universe, until then treasure what has been presented to you.

Ad Astra
Neville Archer
Director, Neptune Division
Æon Trinity
Hope – Sacrifice – Unity



An Introduction to Modern Noetic Science, Orgotek Press © 2122

Dear student – it falls to me to write the introduction to this introductory book for my dear friend and colleague. How does one write the introduction to an introductory book to a subject that has really only just been introduced? QUITE EASILY REALLY! I will simply tell you everything that you really need to know about Noetics, but were too afraid to ask! I shall leave the ‘boring’ equations for those esteemed authors who are being paid for their intelligence rather than their pedigree.

As you (hopefully) already know, Noetic Science came into being (proper) in 2106 with the discovery of the psion particle. Hopefully you will also have realized that the name ‘psion particle’ is a bit misleading. ‘Psion particle’ is merely another name for subquantum particle; just as our forbears found particles within apparently indivisible ‘atoms’ so too might it be with psion particles. There could be hundreds of types of subquantum particle – we just don’t know and will likely never know in our lifetimes despite the ‘almost intuitive’ leaps that we have made in recent years. What we

- are now pretty sure of is that subquantum particles definitely exist. I’m sure that you will all get a mark or two out of that statement! Take solace in that, because the rest of Noetic Science is, unfortunately, not quite so straightforward.

- Noetic Science incorporates the study of Quantum and Subquantum Physics, Psychology and, strangely enough, a certain amount of Spiritualism and Philosophy. You might ask, as I did, “Why incorporate Spiritualism and Philosophy in a Science... Psychology is bad enough!” Well, for one thing it is tradition – the founder of Noetic Science, S.K. Bhurano was all of these things. Bhurano’s insight was pure Philosophy; her understanding was born of years of the practice of Psychology, whilst her knowledge of Physics was merely a requirement of necessity. The lesson here is this – in Noetics you may learn the facts, but to go further you need to follow your instincts. Instincts are literally the most important tools that Noeticists have. We, as Psions, are in tune with the noetic medium – if we focus and follow our instincts we will find the answers that we’re looking for!

- Now – here’s the annoying bit. Noetics is not comprised of one theory – rather it is



NOETICS
CONFERENCE

06.19.23
PERTH, AUS

>> SCHEDULE <<

>> FAQ <<

>> SPEAKERS <<



comprised of many. Fortunately the application of these theories has proven to be somewhat complementary even though the reasoning behind them might seem to be at odds. The reason for this is twofold. Firstly, since the science is comprised of many elements, each researcher brings his or her particular background bias to the theoretical table. Secondly, but no less importantly, each brain and personality is unique. Psions share an understanding of the medium, but they do not necessarily relate that understanding in the same way. Consequently, the study of Noetics can be somewhat subjective in its reasoning – if not in its results.

In the following chapters you will be led on an epic journey. You will learn the Bricks and Mortar Model of the Psi Universe that is currently accepted (for the most part). Let me explain this to you in a nutshell before one of my esteemed colleagues confuses you with numbers. The Bricks and Mortar model holds that Psi is the invisible mortar of the universe. Psion particles surround each quantum particle of each 'object' and guide and control both its form and properties. Yes, yes – conventional physics says that intermolecular forces do those things. What I am telling you is that Psi is part of that intermolecular force. At the very least Psi is there – and Psi knows what is going on. It was by manipulating this intermolecular Psi that the quantakinetics could affect the properties of these particles. Naturally, nuclear forces are amongst the strongest things known to us and require a lot of Psi to influence, but yet it could be done! Basically, this model says that the Rules for the way Everything does and can behave are written in Psi.

A more recent model that you should already be aware of at some level, being Psions, is the Living Universe model of Psi. This theory holds that all Psi is shared by and recycled by life. The theory posits that there is a finite amount of Psi Energy within the Universe, which, like all energy and matter cannot be created or destroyed within a closed system – only cycled through various states. Living Universe holds that ambient Psi is largely disordered. Only living things can recycle Psi from a disordered state to an ordered one. The reasons for this theory are obvious – we know for certain that living things are surrounded by renewing psion fields far stronger than any non-living object, and that the only technol-

>> Triton Archive <<

Subject: Last week's tests
From: S. Bhurano, Chitra Bhanu
To: Matthieu Zwiedler,
AEsculapian Order
Importance: High
Encryption: DSE
Transmission type: textfile
Date: 11.28.10 12.6.2106

Good evening Matthieu.

I was reviewing the results of the tests that we ran last week, and came across some interesting findings. On a hunch I cross referenced the breakdown pattern with the micro-cellular degradation scheme that we were looking at two weeks ago, and it just came to me that the quarks are reacting to some even more fundamental particles – SUBquantum particles! I double checked the settings on the Biosensor and they appear to be in line with our other tests! See for yourself

>>>Attached File: Test Batch
CBAE21064FZ<<<.

I believe that we may finally be onto something, Matthieu. Please go over the prints and see what you make of it.

Regards

SKB

ogy capable of channeling Psi energy is living technology. We know that when something is created – however mundane – that a certain amount of psionic energy flows into it – even if the object is merely a wrench or a spoon. If we're watching and we're focused we can feel this. Some theorists believe that this means that on some level the wrench or spoon is alive whereas the formless metal that was comprised of was not – or at least much less alive. Perhaps they are right? Perhaps not. What is important is that there is a slight, but detect-



able, increase in ambient psi field strength in areas that contain more (obviously) living things, and that Psi energy is imbued into things when they are created – usually by the creator; and that Psi energy is shared between objects – flowing most strongly from higher to lower life.

The Memory Model postulates that Psi retains certain qualities of the area that generates it... or possibly that it encourages the area within it to possess certain characteristics. Extreme examples of this can be found in any city. Walk into any old church or temple. Feel that? What is that exactly? Reverence? Now walk into a graveyard. How do you feel? Solitude? Where does that feeling come from? Do our conventional senses link this sight to some society established meme? We have tested this thoroughly on sites of demolished churches in France – and have found that Psions in particular could still sense the overwhelming Memory of an area – without any visual cues. Is much of the supernatural rooted in the subquantum universe? Read on!

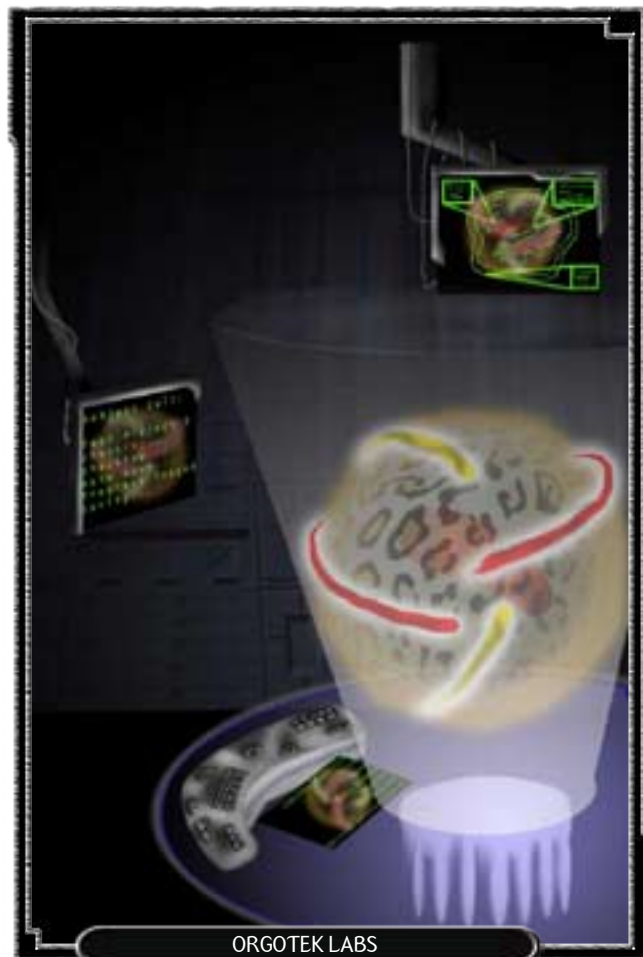
The last of the major theories is the Synchronicity Model. This model holds that psions act like particles and like waves (there is always one you see). Since waves are essentially endless, they are everywhere. If something exists on one part of a wave – it will exist along the entire wave sooner or later, unless it is interfered with. Have you ever thought of someone right before they popped up on your OpNet hololink? If you have then this model will tell you why! And that's not all – the zany folks who came up with the model also suggest that those same nice psion waves travel forward and backward in time too... so looking at the right part of the waveform is like looking into a crystal ball. Now you know how ISRA does it!

What about the rest? Well – there is some biology and there will be more when more of the genome project is restored. Yes – I can hear you rubbing your hands in glee already! There is an in depth analysis of the way different aptitudes work – and (as Prexy Cassel might say) why Electrokinesis is the best! Seriously though, each aptitude works in similar ways – either exerting a force on a specific noetic template – creating, reinforcing, altering, weakening, or destroying – or translating matter into and out of the noetic

medium. For example: a Psychokinetic might summon a flame into his hand. How does it work? Well, if you've ever seen it done you'd know that it gets cold nearby – the Psychokinetic gathers nearby 'free' quantum energy into the noetic template that he has created. The Psychokinetic does not create the energy. He does not create matter. What he does is write a basic rule for the way nearby energy and matter should behave. The stuff of the universe has no choice but to follow this rule. At some level all effects can be understood in this way. Given this, we are thoroughly investigating the limitations of why Psions are triggered with true ability in only one aptitude.

Well, you've read enough for one sitting. That should have given you a taste of the food for thought that comes with this science – so have a nice hot beverage to go with it, and come back for the numbers. Trust me; this subject is worth the pain!

Trevor Knowles, PhD
Head of Research –
Orgosoft Farms





The Physics of PSI - 2108

Dr Charles Watson PhD

Chitra Bhanu Institute

Scientists of all stripes have generally accepted the laws of Thermodynamics since their formation by Lord Kelvin, Carnot, and Clausius in the mid Nineteenth Century.

The first law of Thermodynamics says that the total quantity of energy in the universe remains constant. This is the principle of the conservation of energy. The second law of thermodynamics states that the quality of this energy is degraded irreversibly. This is the principle of the degradation of energy.

The first principle establishes the equivalence of the different forms of energy (radiant, chemical, physical, electrical, and thermal), the possibility of transformation from one form to another and the laws that govern these transformations. This first principle considers heat and energy as two magnitudes of the same physical nature.

The second principle is based on the fact that physical, chemical, and electrical energy can be completely changed into heat, but the reverse (heat into physical energy, for example) cannot be fully accomplished without outside help or without an inevitable loss of energy in the form of irretrievable heat. This does not mean that the energy is destroyed; it means that it becomes unavailable for producing work. Heat is energy; it is kinetic energy that results from the movement of molecules in a gas or the vibration of atoms in a solid. In the form of heat this energy is reduced to a state of maximum disorder in which each individual movement is neutralized by statistical laws.

Similarly the law of conservation of matter states that in any normal chemical reaction, matter is neither created nor destroyed – only its form is changed.

Together these laws form the Laws of Conservation of mass and energy. Laws that Psions seem to flout daily... or do they?

•

— — — —

•

My studies of the PSI phenomenon have revealed that neither thermodynamics nor quantum physics will have to be rewritten to account for the Psionic abilities exhibited by members of the Psi Orders. Although each of these Orders effectively produces something from an apparent nothing, we were previously unaware of the psion particles permeating all of creation. With the insight that like all other particles, psion particles have properties like position, energy and possibly more, there is a new universe of possibilities available. What is more – Psi interaction with other forms of energy seems to follow established norms – in that it takes proportionally more psionic 'work' to produce proportionally larger effects. It seems possible to move matter and energy into a wholly psionic state, but doing so incurs a loss of energy in the transfer. A psionic 'heat' if you will. So whilst the Chitra Bhanu find it possible to absorb potential energy and to recoup some Psionic energy from this, it does appear to incur a prohibitive cost. The reverse is not true – nearly all the Orders are capable of generating energy from PSI, and the Chitra Bhanu are capable of generating mass from Psi – Quantum interaction.

•

Æsculapians and Norça are also capable of generating mass from Psi, so long as it is attached to a physical body. Close examination of this action has determined that this mass is the result of hyperactive physical processes – or super growth. Although this growth does seem bounded by the Psionic capacity of its initiator, it obviously increases the real mass of the target. Close examination of the noetic field surrounding the source and often the target of this 'created mass' has in every case shown a strength decrease repeatedly in proportion to the actual mass created. Æsculapian patients – and the rexes themselves almost always suffer incredible hunger pangs after the application of lotro-sis – further emphasizing the link between



physical energy and mass and noetic energy and mass.

Teleporting also supports the idea of a wholly psionic state of matter and energy. The mass of the teleporter exists at one point and then exists nowhere – and then exists somewhere wholly different. I believe that the teleporter translates his or mass wholly into a psionic state where he or she may freely alter the physical co-ordinates before translating out again. Again, this back and forth movement of mass proves to be incredibly expensive, requiring far more psionic work than most other Psi applications. An alternative explanation for this phenomenon involves a time flux – whereby the teleporter is cast adrift in time whilst he or she adjusts physical location. However, experimentation with Teleporters has proven that they can be pulled out of the Psi dimension in mid jump, albeit only by Bolade Atwan herself, which tends to indicate that they still exist at the time of translation.

Together these phenomena can be taken to strongly suggest that Psi energy does follow existing rules of physics and indeed that Psi should be added to the list of equivalent forms of energy, however, there is obviously a whole new dimension for physicists to explore; a dimension where form, energy and location, possibly even time itself are malleable.

I for one look forward its exploration.

>> CONFIDENTIAL <<

Subject: The Heisler Woman
From: Neville Archer, Director,
Neptune Division, Æon Trinity
To: Maria Pappagallos, Director,
Triton Division, Æon Trinity
Encryption: DSE
Transmission type: textfile
Date: 14:17:29 5.1.2123

This interview >>>attached
holofile<<< was appropriated by
Proteus operatives acting on their
initiative. Any copies that may exist
must not be broadcast under any
circumstances. What do we know
about the Heisler woman that will
gag her? Consider cleanup yours and
William's top priority.

Next – we need to know exactly
where she gets her information. I
want to know who leaked that
document by morning. I'll warm up
the coals.

Neville Archer
Director, Neptune Division
Æon Trinity
Hope – Sacrifice – Unity





>>> file begins <<<

Quantum Misconceptions

– Cori Heisler with Dr Adriaan Goossen,

The Painful Truth © 2123 MMI

My guest today, Dr Adriaan Goossen, is an Æsculapian and a renowned Noeticist – a leader in his field. After graduating in the top two percent of his class at Rotterdam's prestigious Erasmus Medical School in 2109 he proceeded to dedicate his life to helping those in need. He spent the next five years specifically treating and studying cases of Taint ailments across Europe. It wasn't until after the fateful events of 2114 that he tested positive for Latency and became a Vitakinetic. He has recently returned from an Æon Trinity sponsored sabbatical on board the Leviathan Jump Ship, 'Juno'.

PT: Dr Goossen, your early dedication to working with Taint victims suggests that you might have a personal reason for your interest in Noetics?

AG: Yes Ms. Heisler, I do. My father was a Noetic Science pioneer. They called it 'psychotronics' back then and it wasn't exactly a credible profession to be in when he started. His work involved formulating theory to account for true healing by faith healers and such practices as Reiki. Unfortunately he extended this testing to include Taint diseases. He died from complications related to 'D' in 2106 – three days before Sydney.

PT: My condolences Doctor. And please – call me Cori.

AG: Thank you.

PT: If you don't mind my asking, why didn't you go straight into the field of Noetics? Surely it was fully recognized by the time of the Noetic Conference of 2109?

AG: Two reasons, Cori. Firstly I felt the need to make some sort of contribution

towards those who suffered the terrible way my father had suffered; and secondly I wasn't latent before the Esperenza.

It's very difficult for non-psionically active humans to truly study Noetics. You can't... feel... the results of your experiments. You are effectively working blindfolded. That isn't really a very safe thing to do.

PT: So you were one of those 'spontaneous latents'? Can you tell our viewers how that happened exactly?

AG: At the time I was in the Vatican, working at St Jude's. I had been feeling terrible all that day when suddenly I had an epiphany. I knew that something truly horrible had happened to the world, but I felt wonderful. I'm still working through the guilt I have over that with my therapist – but I digress. I flew to Basel the next day, tested positive, and began my training as an Æsculapian. Of course, we are still working on the theory of spontaneous latency – but it seems to boil

down to having a certain genetic predisposition, and, or (depending on the power of the wave) being in the path of a Psi disturbance having particularly energetic properties. Much like atomic fission where an atomic nucleus is impacted with excited particles until the nucleus actually breaks apart; if a psionic template, such as we all possess, is bombarded by subquantum particles with sufficient energy it can be reconfigured; the larger and the more energetic the psionic disturbance, the more likely that it will happen. Of course – it's more likely to cause ill effects than it is to cause latency. Fortunately natural selection has not yet put all its eggs in one basket...

PT: You're saying that we're not all evolving into Psions, as the Æon Trinity would have us believe?

AG: No, I'm saying that the potential is there, but future events will decide whether or not genetic latency will become a competitive advantage.

PT: That seems to be a positively controversial view,



Doctor. Your new limited release academic paper, 'The Misconceptions of Taint and Quantum Energy' also makes some startling statements

AG: Ah...Where did...?

PT: But – even more surprising – it would seem necessary for you to have worked with actual Aberrants to have made some of the conclusions that you have done in the paper?

AG: I'm afraid I can't talk about that.

PT: And can you talk about your recent time on board the Leviathan 'Juno'? That was where you spent your time researching this last paper of yours wasn't it? Where exactly did you go?

AG: ...I really can't talk about that. I'm very sorry.

PT: Come now, Doctor! You do claim that Taint is not what gives Aberrants their power?

AG: ...Yes, I suppose I do. What we call 'Taint' is not a thing – that's a misconception. Taint is not

a particle or a form of energy. Taint is a lack of Psi – a disturbance or a hole – a low pressure in the Noetic medium, if you will. Taint is the result of the use of Quantum energies that Novas command.

PT: Novas?

AG: ...You see psion particles are attracted to Quantum energy particles – atomic forces. They attract and balance or bond with each other like the positive nucleus and negative electrons of an atom. Psion energy is the energy of life. The Mazarin-Rashoud node is just a way that life has found to tap into molecular energy – just as life has found a way to tap into every other kind of energy available.

PT: So Aberrants are natural?

AG: Well... from a certain perspective, yes...

PT: ...And in your paper you conclude that Taint Eruptions can be decreased or prevented by being in areas of 'Psi pooling'. What does that mean?

AG: ...Yes. You see – life, especially sentient life, is surrounded by a stronger Noetic field than non-living things. Psionically active individuals in particular are surrounded by many many more psion particles than other human beings. These particles are shed wherever we go – like skin cells I suppose; so ambient psionic field strength increases markedly in areas which psionically active individuals frequent – especially when they use their gifts.

PT: Like Order bases?

AG: Well – particularly Order bases, but my conclusions have led me to believe that the whole of Earth-Lunar space has increased fractionally in its Noetic field strength. That is why we have far fewer aberrant eruptions now and more Taint disease victims.

PT: So you're saying that Psions cause Taint Diseases?

AG: ...Ah – it looks like someone has arrived to collect me...

>>> file ends <<<



Subject: Lifespan Report as requested
From: Neves Salazar
To: Daniel Keos
Encryption: DDP-9X
Transmission type: holofile
Date: 18:10:24 06.04.2121

Tio, the tests for this year are complete. We have now a large enough sample over enough time that we can seal the experiment for five more years. I attach our finding summary.

- - -

We have statistically proven that Psions have an extended natural life expectancy. How extended depends on three factors over and above the general health of the Psion at pre-operand stage.

- Ability. Strong latents who become strong Psions, and even weaker latents that advance quickly appear to age even slower than those Psions who progress their abilities slowly.

- Age at which the Psion is activated. Late teens to early twenties seem the ideal point to minimize age effect. We call this the slow positive growth stage.

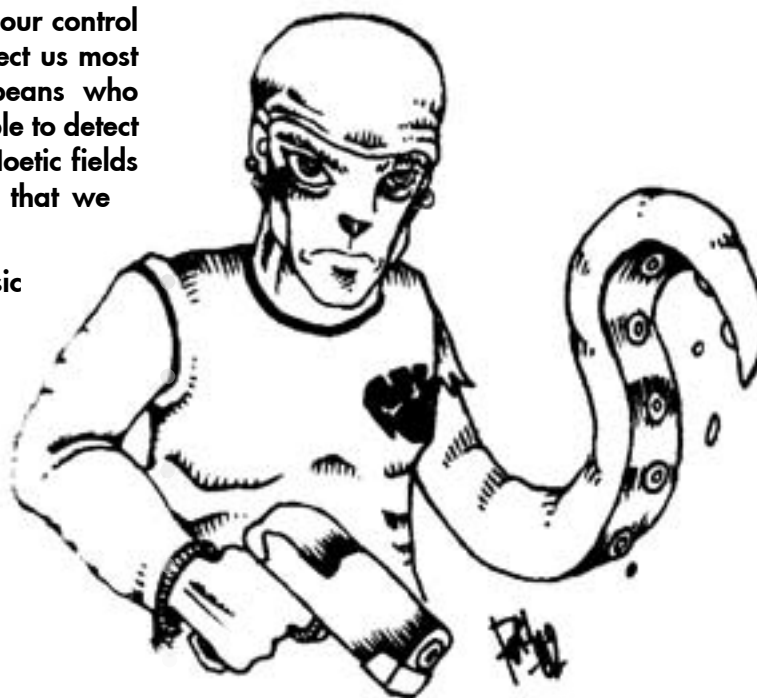
- Aptitude. Of all the orders, our control and self-awareness seem to protect us most from age, except for the Europeans who show the least effect. We were able to detect no age related difference in the Noetic fields of eight of the eleven remaining that we selected ten years ago.

All indications point to a basic minimum Psion natural lifespan of normal (104) plus twenty-five years. Our calculations lead us to believe that this extra could be as much as doubled by strong aptitude and awareness progression. Further, Norça can expect to add

- another fifteen to twenty years to this total, whilst Æsculapians can possibly add upwards of sixty. Those activated in the correct age window can add a further twenty percent. Note: We have no conclusive findings one way or another about Æsculapians activated in the optimum age window. It is possible that they will live forever. We will run tests again in five years.

- Final Note: I have gained access to the Legion database on the physiological and psychological effects of backlash. It seems that backlash stresses can decrease expected lifespan slightly, but also proves that the effects can be largely overcome through extended periods of meditation. It seems they are developing meditation drills for exactly that reason. Perhaps 'the General' can be made to share?

Neves





>> Triton Archive <<

By: Prof. Elaine Madison
Noetics 101

Triton Division, Aeon Trinity

Science Presentation:
Noetic Templates

The idea of a noetic template is fundamental to our study of Noetics. But, "What is it?" I see you asking. The idea is seldom well explained.

Basically a noetic template is DNA extended into the PSI dimension. It is also more than that. Not everything has DNA, but everything has a noetic template. The noetic template is UNIVERSAL DNA if you like. By the Bricks and Mortar model, the noetic template determines not only what something can do, but also what it is.

Many Psions claim that the noetic template extends around the body some small distance in a sort of aura. It is this noetic aura that bioapps tap into to allow us to use them.

Supplemental Report

Bioware Overload

- Lt. Colonel John Killian,
First Legion

Alright, ya ladies listen up! And everyone who's been in combat a time or two better pay attention also. I'm damn sick of the docs breathing down my neck because you sorry excuses for soldiers get greedy with the bioware and end up in their ER's. The bare basics, we all know that formatted bioware sets up a symbiotic relationship with the host Psion and the bioware takes a bit of Psi off the user to sustain itself. Get too much of it on you and it's gonna start to suck you dry - Overload; we've all heard the term. It's not something to be taken lightly, no macho B.S. when it

comes to this stuff, yeh? Even the 'gifted' can only take so much.

Let me explain overload, just in case any of you assholes slept through that part of training. All humans need Psi to live, and while us 'gifted' have more of it - we need it even more. When we don't have enough we start to break down, we become weak, in our minds and our bodies. It starts with feeling light headed, maybe sick to the stomach, and before we know it - if we keep piling the shit on - we're on our backs screaming about pink poodles and imaginary aberrants. Y'see, your mind starts to pull more Psi away from your body to keep itself going; your body starts going into massive shock or seizures. Anyone who's been wounded and experienced extreme blood loss can relate to the feeling.

Sometimes, the mind goes before the body and that's the worst. Most Psions that go into overload don't get dangerous, but those that do usually end up killing themselves or others. You've heard the story about Private Richards, and how he went crazy and killed most of his squad before he was stopped. That was overload; the S.O.B. was wearing over half a dozen 'apps. Luckily for you maggots, overload has never been known to be fatal in and of itself, but I wouldn't put it past some of you to figure out a way to do it.

Always keep your head and think about how many 'apps you're using. If you think you might be getting close to overload, even in the heat of battle then for the love of God, get rid of some of them. In theory, being near a big ass aberrant would be enough to send someone walking the line into overload. Last thing we need is a useless soldier, or worse - a liability to the platoon. If you soldiers can keep yourselves safe, HQ won't pile on more regulations and bureaucracy.

So, keep me out of paperwork here. If you see Joe Knobhead loading up his fourteenth bioweapon, do everyone a favor and kick him in the head to distract him before you take all that hardware off him.

PSI



Psi-Comm 2: Transmission Log 08.04.2122

Subject: Backlash
Importance: Low
Encryption: PC/DSE
Transmission type: textstream
From: Randall Dellinger
Date: 04:19:18 – 08.04.22

Oh man, even I felt that one... Two episodes of backlash in one day... those poor ISRAAns... Strange, least the first one wasn't as bad. Any idea what caused either of them?

From: Wolf Jensen
Date: 06:41:12 – 08.04.22

Who knows, didn't feel a first one. I was sleeping like a normal person, you should try it.

From: Randall Dellinger
Date: 06:41:18 – 08.04.22

Very funny.

>>> SYSTEM NOTE:

GENERAL **Aeon** BROADCAST:

Transmission Setting: Importance is now **PRIORITY** <<<

From: Hardin Pennyfeather
Date: 06:43:19 – 08.04.22

This is an Urgent transmission from Neptune Division. The Leviathan jump ship, Chicago, was in orbit around Luna until 04:17 when it disappeared. The entire crew compliment (with the exception of a Proteus security team and several engineers) were grounded for the duration of the repair work being carried out when the ship was reported missing.

Although no aberrant presences were detected, the possibility of sabotage or attack has not been ruled out. So far the incident has been shielded from the authorities, but I don't need to tell you people that we need answers and fast.

>>> SYSTEM NOTE:

Transmission Setting: Importance is
now **LOW** <<<

>>> SYSTEM NOTE:

GENERAL **TRITON: S&F** BROADCAST: Transmission Setting:
Importance is now **HIGH** <<<

From: Randall Dellinger
Date: 06:43:37 – 08.04.22

Could someone please tell me how the hell that happened? A Jump ship disappeared? How? Do we have any reports of anyone around there? Where the hell is the pilot? I mean those things are 1200 meters long, one just doesn't disappear... Could this thing have been hijacked?

>>> SYSTEM NOTE:

Transmission Setting: Importance is
now **LOW** <<<



From: Wolf Jensen

Date: 06:43:59 – 08.04.22

Well if it jumped from orbit that would explain the second backlash... but it should have been truly massive! And what about the first one... Was it a distraction so someone could steal a jump ship, and if so why wait almost six hours? It was too loud to be Upeo and too quiet to be the ship under its own power. What's left?

From: Randall Dellinger

Date: 06:44:10 – 08.04.22

I'm going to blow some smoke up Nala's you know what and find out what the hell is going on today.

From: Wolf Jensen

Date: 06:44:17 – 08.04.22

Yeh, I'm sure that's exactly what she needs right now. I gotta check something.

From: Wolf Jensen

Date: 07:19:44 – 08.04.22

Jesus! Chicago's Tessers were being modified by a Qin biotechnician!

From: Randall Dellinger

Date: 07:20:10 – 08.04.22

Holy shit! The little slugs have finally turned on us!

From: Wolf Jensen

Date: 07:20:34 – 08.04.22

No... looks like the Qin technician stayed behind. She's claiming that Chicago told her to get off, right before it jumped on its own, no pilot!

From: Randall Dellinger

Date: 07:20:42 – 08.04.22

Yeah... I don't think so... I'm not biting this time amigo.

From: Wolf Jensen

Date: 07:21:01 – 08.04.22

Fine. Just clear the channel – I've gotta talk to the director right now.

>>> SYSTEM NOTE:
Channel closed by **Wolf Jensen** <<<



Subject: Prometheus Chambers
From: Aeon Trinity, Neptune Division
To: Epsilon Level Operatives
Transmission type: textfile
Encryption: DSE
Date: 09:14:10 01.03.2121

The Prometheus chambers are indisputably far more sophisticated than any biotech matrices created by humans, and bear very little resemblance to the relatively primitive biotech of the alien Chromatics. Even Qin biotech – far more advanced ours – takes a very different approach to that used to create the chambers. In truth, much of our technical knowledge about the chambers comes

>> Triton Archive <<

Subject: Captain Tolliver
From: Captain James Coover
To: Field Marshal Jabe
Encryption: DSE
Transmission type: textfile
Date: 17:20:24 06.09.2122

Something is wrong here. We were guaranteed full access to the Prometheus chamber and all the accompanying research, but Captain Tolliver seems to be finding excuse after excuse to try to stall us. Yesterday I saw her screaming at one of her techs for spilling coffee! I swear that she would have hit the man if she hadn't spotted us in the doorway. Captain Tolliver seems to be under a great deal more stress than she is letting on and our presence seems to be aggravating the situation; from the way she treats us, you would think that we were suspected aberrants! I recommend a full psych evaluation and her reassignment to a different post.

PLASMAL BIOTECH

BIO GEL

LEGIONS PROMETHEUS CHAMBER

10.000 x 1 SCALE

GRIP SPIKES

DNA FOR
GRAFTING

USED TO
PERFORM
GRAFT

from a combination of trial and error, and the Proxies' speculation.

Although we have come a long way in the creation of new bioapps, there has been little success in creating new templates based on the Prometheus chambers themselves, or in growing replacement parts for when wear and tear eventually sets in. This is primarily due to the unusual design of the chambers themselves.

As you are, no doubt, aware most biotech is based on a faunal or a floral template – that is they are based on animal or plant genetic models. The chambers on the other hand have characteristics that suggest that they are based on a strange combination of both of these templates! The tanks don't generate a particularly strong noetic signature and seem to draw much of the psi energy they require from the environment. This, and the fact that they seem to require little actual maintenance in and of themselves (as opposed to the psions going through the process – who tend to require many, many specialized techs) is a very floral quality. The chambers also contain distinct organs that maintain processes usually only found in faunal biotech. To find such a close merging of different templates in



>> Triton Archive <<

Subject: Tragic News
From: Captain Kate Tolliver
To: Field Marshal Jabe
Encryption: DSE
Transmission type: textfile
Date: 11:14:35 07.09.2122

It is with enormous regret that I must report that Captain James Coover and two of his staff were killed in a tragic accident early this morning. A security lift bring Captain Coover and his staff down to the Prometheus facility malfunctioned, lost power and crashed to the bottom of the lift shaft. Although all three officers were psychokinetic psions their powers were sadly not able to prevent this tragedy. All three died at the scene before medical aid could be administered.

A full investigation has been launched to find the causes of this accident and preliminary evidence seems to indicate a catastrophic failure in the computer system, affecting the backup systems as well. We appreciate that that it may be a while before a suitable replacement is found to replace Captain Coover and we will forward his report so far to your office forthwith.

Again my regrets.
Cpt. Kate Tolliver

what is essentially one large bioapp is unheard of – especially considering that there is yet another type of biotech at work, which I will deal with shortly.

Although the Prometheus tanks are obviously designed to work with and around the human DNA, they also contain traces of a far more complex DNA. What this genetic material is and where it came from is not known and defies analysis; it does have highly ener-

getic properties – and appears to maintain a certain percentage of its mass in an assimilated psionic state. The most likely source candidate of this unknown and apparently psionically advanced material is the mysterious “benefactors” of the proxies. Of course, confirming this with the proxies themselves is an exercise in futility.

The Prometheus effect itself is still very mysterious. The actual physical process of becoming a psion is well documented by both the media and the psi orders themselves. The latent Psion enters the chamber and is immersed in biogel. The subject then enters a fugue state while nano-organisms infuse his or her body, altering the subject’s noetic template to enable it to withstand the stresses of psi use, and often improving the new psion’s health and physical and or mental potential along the way.

While this explanation is technically accurate, it doesn’t even begin to cover the complexities that govern the change from latent to psion. The nano-organisms described above are actually yet more types of biotechnology called bacterial and plasmal bioapps.

The very existence of plasmal and bacterial bioapps is classified and not widely known, partly due to the fears of their potential as biological weapons and partly due to the fact that this type of biotech is not well understood and difficult to contain. Early research accidents involving these forms of nanoapps led to Aeon asking all Orders to freeze such research until such time as it could be conducted safely. Several Orgotek complexes on Luna are quarantine zones due to rampant nano-organisms. Aeon does not want that sort of accident occurring on Earth.

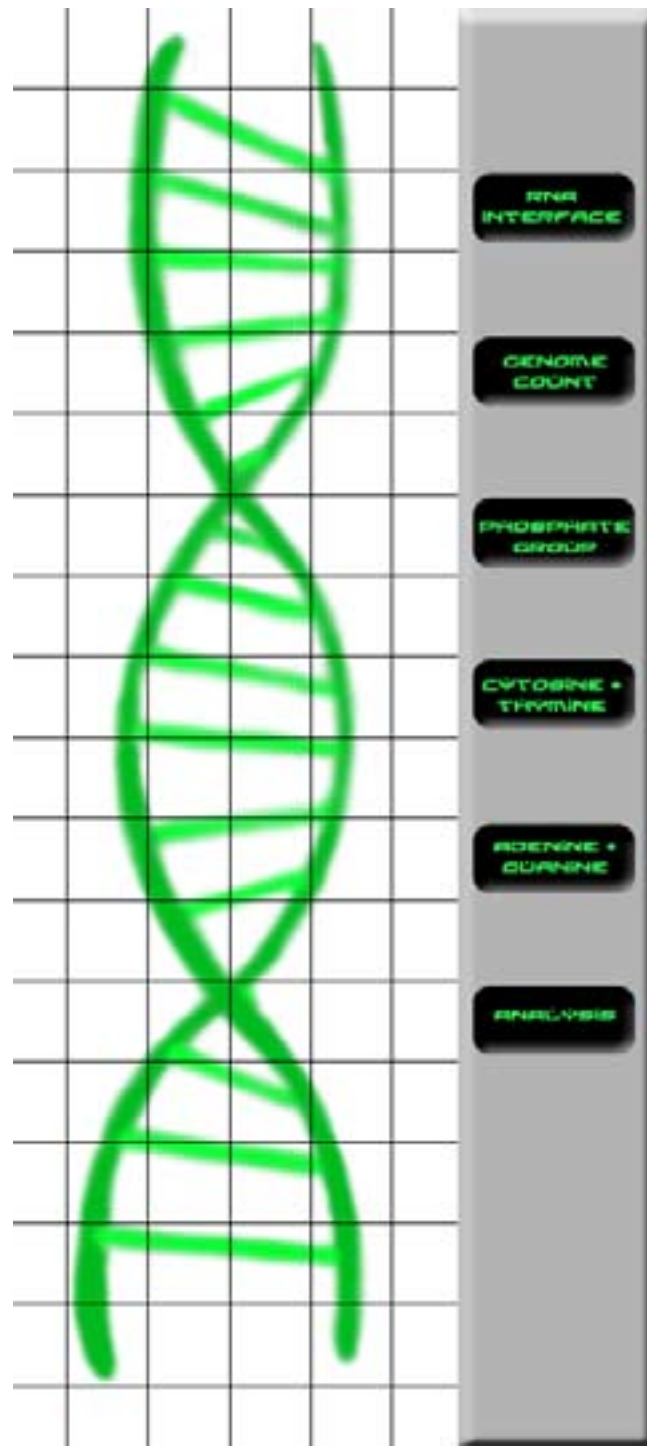
Theoretically, plasmal and bacterial bioapps work in much the same way as conventional biotech but on a much smaller scale – channeling psi energy very literally at the bacterial level. It is these bioapps that complete much of the actual Prometheus effect. It is theorized



by some Legion techs that the rest of the chamber is largely a production and maintenance facility for these nano-organisms.

The most plausible theory of how the tanks work is that the plasmal bioapps somehow graft pieces of the unknown DNA into the subject's genome, and it is this genetic alteration that allows the development of psionic aptitudes. This is a theory that has common support but cannot be conclusively proven one way or another since we have not yet been able to find the suspected genetic alterations in the psions leaving the chambers. Of course, this is hardly surprising given the slow work of re-mapping the human genome; we simply haven't yet got enough of a basis for comparison. This theory also goes towards explaining why the proxies are so adamant that so called "double dipping" experiments should never be attempted again. If an already triggered Psion enters a Prometheus chamber, the plasmal bioapps apparently try to graft genetic material to already altered DNA – putting so much stress on the Psion's noetic template that it destabilizes and actually begins to unravel – leading to a messy and painful death in all of the attempting volunteers. A speculative worst case scenario might involve mutation on an aberrant-like scale – possibly even damage to the Prometheus chamber.

On a related note, the question of why each chamber triggers only a single aptitude is one that remains unanswered despite our best efforts. It is clear that each chamber triggers its Psions in a subtly different way, leading to different aptitudes, but whether this is a natural limitation of the Prometheus effect or whether it was deliberately engineered by the benefactors to be this way is not known. The creators of the Prometheus tanks are clearly far more knowledgeable about the construction of biotechnology and the psi in general than we are at present, and it may be that humanity is not yet genetically advanced enough to be able to handle more than one aptitude – despite increasing rumors of 'naturally evolved' psions.





Ad Astra
Neville Archer
Director, Neptune Division
Æon Trinity
Hope – Sacrifice – Unity

>>>report ends<<<

&%\$\$(&%>>ase do not be alarmed director. Psi Nippon wishes you only well. This was the safest method of contacting you. We have infiltrated Yokohama Research. They r studying psi gene sequence. especially from the Cassel and Bue Li visits. I leave in PgN file for you. ONI

alert SysAd Security Breach

>>>alert sent<<<

disinfect PgN

>>>scanning file: PgN<<<

>>>file: PgN clean<<<

open PgN

>>>translation filter NIHONJIN-ENGLISH applied<<<

>>>file begins<<<

>>Text Lost<< since that time we've been mapping the psionic genome, and differences >>Text Lost<< DNA of Cassel and Bue Li to allow them access to Noetic medium with the strength >>Text Lost<< able to locate the exact sequence. The sequence itself is truly alien, to say the least. We have so far been unable to completely decipher it, with the exception that it is based on ninety-six of >>Text Lost<< thirty-two. The official report is attached. >>File Not Found<< I know I don't need to tell you >>Text Lost<<possibilities are truly astounding. We may yet find the proof for your theory but we really need to be able to see psion level particles >>Text Lost<< how to remove whatever barriers there may be. >>Text Lost<< results in six months time.

Ishimaru Akio

>>>file ends<<<

new email

Subject: Answers

From: Neville Archer, Director Neptune Division, Aeon Trinity

To: Maria Pappagallos, William Renton

Priority: Urgent

Encryption: DSE

Transmission type: holofile

Date: 12:21:34 12.18.2122

It sounds like Nippon has the whole genome project. If they have that they may still have everything.

I want your best teams on this one.

>>>file: PgN<<<

>>>sig<<<

send email

>>>email sent<<<



Excerpt: When it all goes to Hell

A brief overview of Psionic Backlash and Deprivation

by Lt. Jonathan Harper, 3rd Legion Vitakinetic

So you want to know what backlash is, yeh? Let me tell you it isn't pretty. Psi exists in all things, yes just like you learned in basic Noetics; all of life is caused by and causes Psi. It is like this great spiritual force that permeates through the entire universe and affects all living things. Now I know what you are thinking; don't tell me all that mumbo jumbo stuff, tell me the important information; and I will. You see there are two types of backlash. The first exists when there isn't enough ambient Psi for one to properly function, this is referred to as Hypopsionic Backlash (sometimes called Hypopsionic deprivation); the other being the opposite and is referred to as Hyperpsionic Backlash. Symptomatically the two are very similar, although Hypopsionic symptoms have a gradual onset, whilst Hyperpsionic symptoms are immediate.

Before we go any further you have to understand what we believe in the Legion – that all living things interact with ambient Psi. Life takes in weak, unordered Psi, and gives it shape and identity before releasing it back into the area. This is how Psi gains memes and how areas gain 'feels'. This 'ordered' Psi is effective energy whereas unordered ambient Psi is not.

As Psions progress with their training, they grow in strength in several ways. First they become more attuned (and more attuned is right – even blanks are aware at some level) to the Noetic flow of the universe and so are more sensitive to Psi movement and thus become vulnerable to backlash. Secondly they become more able to process the ambient Psi in the surrounding area. Finally they become more aware of the fact that they ARE processing the Psi in the surround area and eventually gain more control over this.

Allow me to explain further: any living body, and a psionically active body in particular will naturally attempt to process ambient Psi, and requires a certain level of it to operate, much like humans needing a certain level of oxygen to function well. The strength of a Psion determines how much he or she will require for everyday existence. For example, the proxies will use a higher amount of Psi than all of us underlings. However, truly powerful Psions

become like divers or mountaineers; their bodies have become so adept at processing Psi that they can effectively hold their Psionic breath past the point when Joe Hologram would have snuffed it. Normally this is a double-edged sword; I'm sure that many of you have heard the stories of the troopers who come out of the tank bursting with Psi strength, yet are laid out completely by even minor incidents of backlash. You may also find yourselves wondering why the proxies are still alive after the Esperanza disaster!

Just as those powerful Psions will find themselves processing less Psi in a Psi Low area, the Proxies seem to be able to cognitively close themselves down almost to the level of a blank. They literally stop all Psi interaction with their auras. So, much like an experienced diver can often times survive on little to no oxygen OR on oxygen rich mixtures for when they go really deep, a truly, truly potent Psion can survive in either Psi rich, or Psi depleted areas. The question you have to ask yourself though, before you end up deader than a Frenchman in New Paris, is exactly how good are you? You just have to know your limits – and that knowledge comes with a lot of pain, yeh.

Just so you know it when – not if – it hits you, I'll run through the symptoms of backlash now. Imagine someone very large has grabbed hold of your head and is shaking you by it, smacking you into every wall in the place. That's what Hyperpsionic backlash feels like. Hypopsionic is the same, only the person shaking you is smaller, but they keep going and going and going. With and immediately following the pain come nausea and vertigo, but you should also be aware that there have been recorded cases of psychoses. Yes, believe it. Some Psions just can't take all that at once. You have to keep an eye on your buddies after backlash... Oh, yeh, while you're keeping an eye on them, try to make sure you're not paranoid. What happens, the eggheads theorize, goes as follows – when you are out in the field and there is a sudden spike in the level of Psi your brain reacts similarly to a sudden spike in certain chemical levels in your body. It attempts



to purge the system. The nausea is the result of the purging. The vertigo is brain's translation of the imbalance of Psi. So, you see, on an unconscious level our bodies and minds have always understood Psi, it's just our conscious selves that are finally waking up to it.

Now that I have told you about Psi and about the types of backlash you are probably wondering how it happens. How is it that we have areas of increased or decreased Psi? Doesn't nature balance it all out? Well the answer to this is yes; to an extent. You see the universe is constantly attempting to reach an energy equilibrium where the level of ordered Psi is equal everywhere, but each living thing is a whirlpool – sucking in unordered energy and releasing ordered energy so Psi is constantly flow and flux.

Both Psions and Abberants have the ability to affect Psi levels –either directly or indirectly; respectively. I am not absolutely certain how it works but the "taint" that is used by Abberants "pushes" the Psi that is naturally in an area out of the way or makes it hard to use and this results in decreasing Psi levels. It takes a lot of aberrants or some scarily powerful aberrants to actually drop Psi levels sufficiently to cause Hypopsionic deprivation – but it's always a danger, especially for teams that operate in such areas for long periods.

When Psions use their abilities they draw on 'Ordered Psi' and leave disordered energy behind. This decreases the actual level of Psi only when Psi is translated into other forms of energy (and generally only very slightly even then). What Psions do find though is that they are able to regain Psi energy much faster in areas of strongly ordered Psi Energy – which stands to reason since their bodies need to do less energy processing to get the Psi into a usable state.

Also since all living things contain Psi, and because the "Psi-reserves" within them is largely released on their deaths, there is a jump in the level of Psi in an area when there are deaths. When many, many people die (i.e. Esperanza) the amount of Psi released into the area is so immense that it can often result in truly horrific levels of backlash.

That answer your questions? Good.

A look at Psionic Dysfunction

• **Subject:** Psi Dysfunction
• **From:** Aeon Trinity, Neptune Division
• **To:** Epsilon Level Operatives
• **Encryption:** DSE
• **Transmission type:** textfile
• **Date:** 10:00 11.02.2119

• The effects of psi dysfunction as we normally understand it have been widely documented, but there are still a great many questions that remain unanswered. Dysfunction is brought about by the over specialization in one particular mode of a psionic aptitude at the exclusion of the other two. The effects of dysfunction vary widely but it can cause severe psychological and social problems in those afflicted. The reason why psi is actually separated into logical aptitudes is not known and certainly seems to go against what noetic researchers have theorized about the way in which the subquantum universe operates. Is the structure of psionics naturally this way? Is it a structure imposed by our own minds and Order training regimens? Or did the benefactors artificially segregate psi as some kind of control measure?

• Interestingly, we have been able to theorize much more about the nature of psi from the way in which alien races manipulate psi energy. The most obvious example is the psi potential of Chromatics. All of the Chromatics have demonstrated incredible photokinetic powers, surpassing most human electrokinetics, but there have been no confirmed observations of them ever using either of the other two modes of the electrokinesis aptitude. Of those Chromatics that possess this level of skill, none have been known to exhibit any of the symptoms of photokinetic dysfunction. In fact, noetic scans of captive Chromatics and the scans taken during the recent invasion of Chrome Prime have shown that the noetic templates of these aliens are remarkably stable and balanced. Although there is little empirical evidence, it is generally agreed that Chromatics do not suffer from the effects of dysfunction, or at least not in the same way.



The most likely reason for this is that the entire Chromatic physiology is designed for the production, manipulation and detection of light. This allows their alien physiology to easily compensate for any of the usual effects of photokinetic dysfunction.

Like the Chromatics, all the Qin population possess psi abilities to a certain degree, although very few develop these powers to any great strength as we would reckon it. The strongest Qin have a psi potential that would only be considered average in a human telepath. Although they seem only to possess powers of the telepathy aptitude, they lack the psionic potential to reach the point at which they would become dysfunctional.

We have considerable data on the symptoms, side effects and treatment of psi dysfunctions, but we lack much information on the possible long-term effects that it may have on the psion, even after the dysfunction has been corrected. An illustration of this is of a young pregnant electrokinetic who was successfully treated for electromanipulation dysfunction in 2108, who later gave birth to a healthy baby son. However, as the child grew older he exhibited a number of unusual behavioral characteristics that seemed to indicate electromanipulation dysfunction, even though he was not a psion himself. These symptoms grew stronger as he grew older and so far have resisted every vitakinetic attempt to correct them.

As an aside, an interesting and controversial theory that has been circulating recently is the possibility of aptitude dysfunction. The theory states that if a psion becomes extremely powerful in every mode of his or her aptitude, there is a possibility of developing a condition that seems to have dysfunction-like effects. Consider the Proxies for a moment. Each is supremely skilled in their respective aptitudes and yet each has a different and somewhat extreme personality quirk which could be

seen as negative. Cassel is energetic and attention seeking, del Fuego is charismatic, but authoritarian, Herzog is enigmatic and contemplative, Bue Li is secretive and mysterious and so on. Similarly, psions who reach a certain level of psionic power tend to become more eccentric and often egocentric, displaying many of the traits that characterize the Proxies themselves. Those who have met the Proxies have reported that each often displays unconscious and casual manifestations of their powers, and the force of their personalities is greatly enhanced by the sheer power of the their noetic auras. These traits

are generally attributed to the pressures of their work and to their various characters, but what if these traits are the work of something more fundamental?

The most critical question is whether or not these extremes of behavior will become more pronounced as time goes on and make history repeat itself. Consider the revelation of the circumstances leading up to the exodus of the Upeo and the Esperanza disaster. These were avoidable incidents that could have been prevented if the Proxies hadn't been bickering between themselves and allowed their differences to escalate

into open conflict. There is no suggestion that the Proxies and other powerful psions are in any way comparable to the aberrants of the previous century, but some of the parallels cannot be entirely overlooked.

If this type of dysfunction is indeed the case, treating it becomes far more problematic. Balancing aptitude dysfunction by developing a second aptitude isn't possible since a second exposure to the Prometheus effect will kill a psion. The development of multiple auxiliary modes could be a partial answer but it might not be sufficient, and none of the Proxies have ever demonstrated any ability or even inclination to learn auxiliary modes.





Æon Supplemental Report

Interviews with returned Upeo have been able to shed a certain amount of light on the possible cause of the so-called "Psionic dead zone" at Nyoto Kukumbatia space port, the former base for the teleporting Order. After the Upeo disappearance reports came in from investigating Psions that the base was effectively psionically dead.

Reports from returning Upeo state that Proxy Atwan activated an extremely powerful teleportation effect which resulted in a tremendous Psionic shock-wave. She seems to have teleported away even the ambient Psi and left the entire area devoid of almost all activity on a subquantum level. The reason she did this is not known, but several of us have the suspicion that she effectively hid her traces – no Psi was left behind imprinted with her destination. If this is what she did, we're all very curious to know who she thinks is capable of reading such signature Psi. This seems to be the only area in human space that has this negative Psi zone. Or, at least it was – Psi levels in the area have gradually returned to normal – although it took almost two years.

Generally, the situation about Order bases is very different. Generally, the level of Psi energy here is very high. A side effect of this seems to be that people living in these areas enjoy very good health and lower levels of stress. Athletes in particular seem to be able to train very quickly. We believe that because the number of Psions in the area is so high, the Psi flows that much stronger and energises all the templates in the area. This seems to have no measurable effect on the tensile or compressive strength of non-living objects, but has been statistically proven to improve human endurance, and even demeanor.



Clearance: Theta

File: AT/T/C2123/Herophilus/QuantumTemplate

Research Project: Herophilus

Additional Keywords: Aberrant Noetic Template, Quantum Template, Subject C

Format: Research Summary/Speculation

Project Findings Dated: 5.3.2123

Researchers: >>>classified<<<

The rate of subject C's noetic template degradation seems consistent with that experienced by neutrals post mortem. Since C was terminated before its M-R node was able to reinitialize, Quantum radiation appears minimal and rapid decomposition or degradation is not in effect. Our best estimate of the strength of the template at death appears to be equivalent to that of an eighty to ninety year old baseline.

[NOTE: You asked for anything we had – so I'll put down what we think. We cannot be held accountable for the results of trials based on these conclusions as we have not been able to test them in any sort of rigorous way. From any sane scientific context much of the below is little more than guesswork.]

Given C's youthful appearance and known aberrant lifespan, we are currently speculating that all aberrants undergo a process whereby their Noetic template is partially 'replaced' by a 'solidified' Quantum/Noetic Energy field. The Quantum energy within an erupting aberrant expands into an aura about it. That aura encompasses and bonds with the aberrant's own noetic template as well as nearby psion particles. Because quantum particles are incredibly attractive over very short distances, the psion particles within the aura are not released or recycled over time as would be the case with a normal or a psion. Rather, these psion particles interlock permanently with the quantum particles forming an incredibly tough shell about the aberrant.

For a metaphor, imagine the 'psionic template' is a mould and modelling metal is quantum energy. With aberrants the modelling metal is so hot that it melts part or all of the mould and incorporates mould material into the final figure. The shape that is produced looks a lot like the mould, or perhaps it burnt right through here and there and came out misshapen, but the important part is that the metal is now mixed with mould material and that mix-

ture is stronger than the metal on its own.

The initial eruption process is violent. Like a supernova the quantum energy within the aberrant expands outward grabbing hold of as much noetic energy as it can, then it contracts back tightly about the aberrant under the weight of its own attractive gravity. This initial eruption is very important as the psion particle energy in the area can have a meme or a biosphere energy associated with it – as per the Memory Model of Psi energy – which can dramatically alter the properties of the new template of the aberrant. See Triton Archive >>>AS/P/C2043/Herophilus/Eruption<<< and >>>AT/T/C2122/Herophilus/Eruption<<<.

As an aberrant gains more power, the energy within it increases causing its quantum aura to expand slowly and draw in more Psi from the environment – but only from a relatively short distance away. Now, if the number of psion particles in the environment is low then the aura doesn't expand as much as it does when the Psi particle count is high. Instead the quantum particles within the aura start to share their hold on psion particles. This means that the aura is reconfigured rather than reinforced. Reconfiguration of this kind leads to 'aberrations' since the quantum/noetic template is being changed. The chance of this reconfiguration seems to be much higher when the internal quantum forces increase suddenly. Gradual strength increase seems to almost always result in gradual aura expansion, which in turn always seems to find sufficient free Psi to incorporate.

Normally (when the aberrant isn't increasing in power quickly) the innermost part of an aberrant's aura/template is quite static, but excess quantum energy within the aberrant gradually works its way out through the aura – making the outer edge of the aura psi attraction positive. This outer edge zone of the quantum/noetic aura sheds 'loose' quantum particles that go



on to pollute the environment as 'Taint'. This outer zone is larger in aberrants that already have auras that are sharing psion particles. Consequently these aberrants are more 'Tainted' than others.

The aberrant Noetic template cannot be detected by psionic means because it is fully bonded with Quantum energy – further, unbonded psi energy in the area is slowly attracted to the aberrant, causing the energy to be heavy and unresponsive to Operant Psion use. Psi particles do not cycle through aberrant auras to create the normal life ripple that Psions detect with attunement, rather the slow attraction of nearby 'heavy' Psi and the release of excess quantum energy causes a hole in Psion perception.

What we have seen time and again in battle-field reports is that Operant Psions are able to harm aberrants with their abilities even though the aberrants resist what would normally be far more powerful attack vectors. What seems to be happening is that the force with which the psion particles are being driven into the aberrant is sufficient to displace some of the psi energy within the aberrant's own aura – causing a brief weakness as old particles are replaced with new.

Our E. research does support these suppositions. We're guessing that the Novas there

were saved by the fact that they brought their own baselines with them. Those baselines helped to 'recycle' ambient Psi – making the strength level of Psi in the area that much higher. That, and the fact that they picked a particularly vigorous planet to settle makes them less likely to be 'tainted' than aberrants living on more desolate worlds. Interestingly the Edenites' method of dealing with Taint disease seems to involve quantum forces attracting quantum particles – rather than our approach of using noetic template reinforcement to draw off the uncontrolled Quantum Energies.

To conclude: we find that Psi is indeed a quantum force limiter, but not for reasons of repulsion as previously believed. Rather, the two particle types bond with and compensate for each other. Consequently psi and quantum abilities leech off each other and so are less effective or require more expenditure of energy to function in the other's presence. Whilst aberrants seem particularly vulnerable to Psi based abilities, the reverse does not appear to be true, but given the relative scales of power this is of little consolation to most Psions.

>>>Signature Removed<<<
>>>file ends<<<





Science Presentation: Psi Low Zones

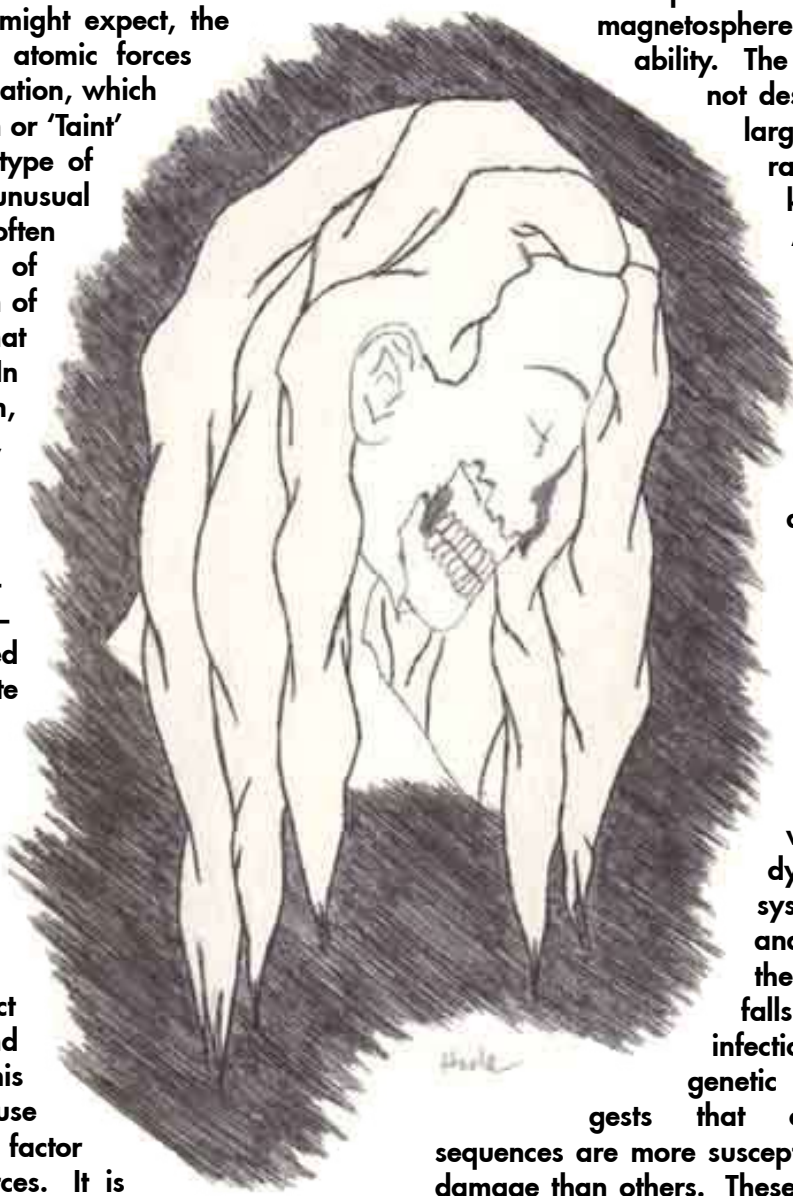
By: Prof. Elaine Madison - Noetics 101

Triton Division, Aeon Trinity

Good Evening Ladies and Gentlemen.

Tonight I will be discussing with you the concepts and the theories involved in Psi Low zones, also called Taint Zones.

Humanity has come to know, at some cost, that the powers the aberrants wield are based around the fundamental atomic forces. As you might expect, the manipulation of atomic forces gives rise to radiation, which we call Quantum or 'Taint' Radiation. This type of radiation has unusual characteristics - often even some sort of bizarre reflection of the aberrant that generated it. In essence though, Taint is radiation, and radiation is a fairly well understood phenomena. Understanding radiation has allowed us to create modified Geiger counters called Aberscopes to detect aberrants and tainted areas. Psions can also use their abilities to similarly detect aberrants and tainted areas. This is possible because PSI is a limiting factor for quantum forces. It is PSI that limits and degrades quantum attraction and repulsion by 'sticking to' active quantum particles. Because these 'active' quantum particles hold onto the surrounding PSI, Psions experience a hole in the flow of the 'Noetic River', as Otha Herzog might put it.



In 2123, every primary school child is taught the dangers of atomic energy in Basic Science and from the history of China's Ultimatum Weapons. Everyone here should know that the human body is designed to withstand and repair a certain amount of radiation damage. The background radiation that permeates through Earth's magnetosphere necessitates this ability. The human body is not designed to handle

large amounts of radiation of any kind, however.

After a point the body cannot repair the cellular damage that it inflicts. Certain of the body's systems are particularly sensitive and generally first to fail; the white blood cells and marrow tissue being the primary concern here. With the white blood cells dying, the immune system fails fast and the rest of the body rapidly falls to secondary infection.

Recent genetic work also suggests that certain genetic sequences are more susceptible to radiation damage than others. These sequences have certain 'weak genes' that are easily damaged and propagate in damaged form. This is what we believe is the cause of Aberrant Syndrome.

To recap what you should already know, high levels of radiation result in radia-



tion poisoning. Early symptoms of radiation poisoning include nausea and fatigue, often followed by headaches, shortness of breath, hair loss, anaemia, dry coughs, sub dermal bleeding and haemorrhages. These secondary symptoms often take some time to come into effect, depending on the radiation dosage. Anything from years, down to weeks or even days is possible. With Taint Radiation, even fairly strong doses usually take years and longer to take full effect. Unfortunately the full effect does tend to occur even with treatment. Additionally People suffering from radiation poisoning are upwards of four times as likely to have offspring that are malformed. Those are just the basic symptoms of radiation damage. I'm sure many of you have some knowledge of the various Taint illnesses. Those maladies are the result of the unique properties in certain of the taint radiations.

Some of you may have heard that Psions have proven to be somewhat resistant to radiation. This is true. Remember that radiation damages more than just DNA. Because it reacts to PSI, radiation can damage the noetic template, so naturally Psions and Latents who have noetic auras that contain more PSI and that 'recycle' ambient PSI in a self-reparative way are somewhat resistant.

Now, let us apply this knowledge to what you, as agents, might find in the field.

When facing even a relatively weak Aberrant, or when you find yourself in an area of particularly high Quantum Radiation bear in mind that the Psi that you might utilize (should you be Psions) will very quickly bond with ambient quanta particles and thus become 'heavy' and unresponsive – essentially neutralized. Consequently, weak psionic effects will behave erratically. More powerful effects draw Psi from a wider area, which tends to dilute the negative effects of Quantum pollution. The downside of course is that these effects also draw more heavily on a Psion's own reserves and can leave a Psion drained and vulnerable.

Our experienced field teams generally suggest that should you ever find yourself in a situation where you are facing an aberrant, using your most powerful Psionic techniques

first will both neutralize some of the taint in the area so that weaker follow up techniques have more chance of success AND will also do the most damage to the aberrant – giving the highest probability of success. Also, don't forget that en masse Psi effects will permeate an area with strong enough ambient Psi that aberrant abilities start behaving erratically. The coin does have two sides.

What agents might forget in the classroom is that humans are not the only things affected by Taint. Whilst the Quantum radiation is strong in an area, it can affect the noetic templates of all kinds of life – damaging anything growing and living there. Plant life has been known to mutate defensively – even incorporating the quantum energy that damaged it. This Tainted biosphere phenomenon is a major problem which hinders cleanup efforts – often a whole area needs to be cleansed of damaged life before restoration proper can occur. Additionally, tracking aberrants through tainted biospheres is far more difficult for our Proteus teams.

Our studies have further led us to believe that even once ambient Quantum Radiation in an area is completely neutralized; Psi in its 'bonded' form becomes an obstacle because it hinders further Psi from easily entering the area. This means that even after the taint disease risk is gone, people living in these areas of diffuse Psi concentration tend to suffer ill health. This phenomenon does seem to fade slowly over several years, particularly when there is increases Psi usage in the area. Currently a Norça project utilizing floral bioapps seems to be having some success in combating the problem.

All right, that is all for today.

I have prepared holos from my recent sabbatical into the LAST Zone where efforts to decrease the effect of the Taint are greatest – and also from my time in Shattered France where the people living on the borders of the Rayonnaire areas of Quantum Radiation make ideal study subjects for this topic. I suggest you view them at your earliest convenience.



>>> holofile transcript begins <<<

3 March 2122.

Oxford Special Guest Speaker: Dr Rona Moshay,
Director of Port-Au-Prince Clinic, Haiti
– presenting today's lecture:

The Etiology of Taint Diseases

Let me first thank you all for the invitation, and might I say that I'm particularly looking forward to the ball later.

[(laughter)]

Seriously though, the mere fact that I'm here proves that Oxford heartily deserves its reputation for going out of its way to acquire holistic viewpoints on important subjects. We at Port-au-Prince have the third largest taint disease treatment facilities in human space – after Basel and Luna. Our advantage is that whilst the two larger taint treatment departments possess no less excellent doctors, they refuse to accept more traditional and holistic methods of treatment. We believe it is for that reason alone that our success rate is almost five percent higher than Basel's.

Of course, I'm here to talk about Taint Diseases rather than our treatment regimens and statistics, although I will touch on the former briefly and hopefully more so during your question session.

There are currently several recorded varieties of taint disease, and each of these can manifest variant symptoms. Can anyone here tell me what defines a taint disease?

Yes, the young lady at the back.

Student: Taint diseases are caused by exposure to Taint (also called Quantum Radiation) and are characterised by a psionically detectable Taint Register. Taint diseases are not infectious, but are resistant to Vitakinetic healing.

Someone has been doing her homework! Yes, correct!

Taint energy, like all radiation, does more cellular damage the longer the victim is exposed. Taint is particularly danger-

ous because it has a biological effectiveness factor of four. That is four times higher than X-Rays or Beta Rays. That means that every Gray of Taint a person absorbs equates to FOUR Sieverts of cellular damage!

Before I go too much further let me tell you a bit about the Aberrant Syndrome itself. Although A.S. can't be defined as a taint disease because people who have never been touched by Taint Radiation do suffer from it, the risk of A.S. does seem to increase fairly significantly if you have suffered Taint exposure. A.S. is the result of what you might call a 'slow eruption'. The victim of A.S. is developing a Mazarin-Rashoud node at a far slower pace than was normal for the aberrants of the previous century. The side effect of the slowness of this eruption is that the poor victim's body is wracked by small bursts of Quantum Radiation from within itself – resulting in severe noetic template degradation and cellular damage. We believe that fully erupted aberrants have some means to compensate for this template degradation – not so with these poor souls.

With template degradation virtually any prognosis is possible, but the usual course is headaches followed by a shortness of breath and fatigue and then, if the node has still not manifested fully, by the wasting of the hard and then soft muscle tissue and the formation of Taint Cancers in all the major organs. The whole course of A.S. takes place over a period of between one week and three months. Occasionally victims of A.S. erupt fully – exhibiting superhuman strength and or full quantum abilities and our security personnel are forced to intervene. They do this reluctantly – but for now Aberrant Syndrome is truly a no win situation. Because of this, many patients opt for Euthanasia, often sign-



>> Triton Archive <<

UNITS OF RADIATION

Radiation is the result of elemental decay and as such is measured in elemental decays per second. One becquerel (abbreviation Bq) is equal to one decay per second. Absorbed dose is measured in grays (abbreviation Gy). One gray corresponds to one joule of radiation energy deposited in one kilogram of matter. A dose of 3 to 5 Gy will kill fifty percent of people exposed in one to two months. This is a large unit and the milligray (mGy), which is one thousandth of a gray, is more commonly used. When radiation interacts with living tissue the effect it has varies with the type of radiation. To allow for this, the dose in grays is multiplied by an effectiveness factor and the new units are called sieverts (abbreviation Sv) and the dose is called the effective biological dose. When radiation is absorbed in the body it causes chemical reactions to occur which can alter the normal functions of the body. At high doses (above 1 sievert) this can result in massive cell death, organ damage and possibly death to the individual. At low doses (less than 50 mSv which is almost always the case with Taint radiation) the situation is more complex, with certain gene containing cell types being more resistant or susceptible than others.

ing Living Wills – giving us their blessing to study their aberrant bodies. This is not required since the UN passed Resolution 47–3 in 2109 which gives Æsculapians and the Æon Trinity the right to study aberrant corpses for the purposes of finding methods of defending against them. We, at Port–au–Prince do like to get that signature. It allows the victim a chance to fight back and to make a willing contribution, and eases our conscience somewhat about the work that we have to do. Should you want to sign a Will you can do so any time. Just send your agent to our OpNet site with your particulars and your SID.

Currently we have only been able to delay the effects of aberrant syndrome. It responds slowly to lotrosic and Mentasic techniques, but our most promising results seem to occur when we combine these with hypnosis, psychotherapy and traditional vodoun medicine. Obviously the conscious mind is a great factor when it is utterly determined not to become an aberrant...

The taint diseases proper – Wexler's, D, GCS, CBD, Trifal and the rest have a definitely taint register, but are not the result of the formation of an M–R node. You should know that Total Allergy Syndrome, No Touch and Ant Farm Syndrome, although often blamed on aberrants, are not classified as a taint related because they don't have a taint register. Those diseases are caused by various factors often present in Arcology life. We can't blame the aberrants for everything, but there is plenty that we can lay at their door.

D is by far the most common of the taint diseases. The 'D' is often thought to stand for Decay, but I'm sure the young lady at the back can tell you that in actual fact it is a shortened and more pronounceable abbreviation for the name of its discoverer, the Dutch Noeticist Dr Johan Dijkstra. D is the most common of these diseases because it takes a very small dose of Taint to take effect. This particular Taint seems to somehow target particularly susceptible sequences of redundant genes, which are common, but hardly ubiquitous. Cells



with this altered coding multiply and attack surrounding tissue. I'm sure you've all seen the D Victim's Fund Appeal on the OpNet – you've seen the slow decay it causes. D takes between one and three years to kill its victim. The only vaguely positive thing with D is that the nerve endings are one of the first things to atrophy, leaving the victim free from most pain during the ugly end stages of the disease. Loss of tactile sensation and hearing accompanied by a prickling on the skin are early warning signs of D affliction. To date, twelve cases of D have been completely cured, or more precisely, held at bay through Vitakinesis and traditional (and of course non-traditional) medicine. These cases have all been caught very early and have required continuous lotrosic treatment over a period of years. We predict that these 'lucky' victims will finally be free of their treatment regimen about ten to twelve years after its inception. We're currently designing the matrices for a nanoapp that will alter the gene sequence that D seems to target to act as a type of vaccination. Of course, we can't go beyond the drawing board until we convince the UN to allow us to resume the testing of Plasmal BioApps.

Wexler's disease – named for Doctor Frederick Roger Wexler, once a member of this esteemed university I believe, is probably the worst of the bunch. The problem with Wexler's is that it always starts out extremely subtle. There are no symptoms for years and when they finally do occur, the symptoms are often misdiagnosed. This isn't surprising since the symptoms are a result of slow changes in the brain's chemistry that can result in mood swings, erratic behaviour, schizophrenia or paranoia. Those symptoms could be the result of many things! Two to three years after the mental aspects set in, the disease moves to the rest of the body. There is no mistaking a Wexler's sufferer for anything else at that point onward. Affected organs behave erratically causing all kinds of symptoms and a great deal of pain. Finally, the body's ability to process fluids is affected, the blood vessels become somewhat porous

>> CONFIDENTIAL <<

Subject: Relocation
From: Hans Beitz
To: Malachi Ross
Encryption: SPE
Transmission type: textfile
Date: 16:24:32 09.24.2119

Doctor Ross, your request for transfer to the Beaulac Clinic on Luna has been approved. I am sure that you will find that Olympus can offer you many new outlets for your research. You will be working under Dr. Jerzy Grabowski. You will be fully briefed by Dr. Marr in regards to what your assignment will be by once you reach Luna.

and infection sets in under the epidermis tissue. The body swells and body fluids seep through the pores. Sufferers of this disease opt for Euthanasia in almost every case. Not one has been cured. The only fortunate part of Wexler's disease is that so far it is not very common, although the number of victims seems to be increasing – no doubt as a result of the aberrant's return.

We're currently still guessing at how Trifal comes about. We do know that it is a state in which the white blood cells become hyper-energetic – attacking more and more types of cell. Over a period of between two to six months the blood vessel walls begin to break down causing the now caustic blood to seep into surrounding tissue, whilst the marrow tissue expands, breaking open the skeleton from within – eventually resulting in a horribly disfigured death. At Port-au-Prince we have had two of the five cases worldwide in which Trifal was successfully cured. Cures in



these cases were attributed to successive trans-fusions as well as the constant use of the art of Reiki – which we believe slowly strengthens a noetic pattern – together with lotrosis, which, of course, does much the same thing in more forceful doses. The warning signs for Trifal are bloodshot eyes and cuts that won't heal, together with chest pains and loss of feeling in the extremities. Trifal has so far only been recorded in people who have been affected by relatively strong doses of Taint Radiation.

CBD, Compound Breakdown Disorder is a degenerative disease that strikes at both the immune system and one of the lungs, kidneys or central nervous system. Whichever organ it targets first, CBD gradually (normally over six to eight months) infects all of these systems – usually resulting in a slow, painful death – normally quite some time after the loss of cognitive processes. For that reason CBD is truly difficult to deal with. How do you tell a sufferer that they will very likely die slowly, after they have lost everything that makes them who and what they are? Untreated sufferers of CBD generally die from immune deficiency complications before losing cognitive function – which in many cases is preferable to the treatment option. The most utterly difficult thing about CBD is that occasionally – with about one in thirty sufferers – treatment results in the disease going into partial or total remission – the immune system recovers, although the affected organs usually do not. Obviously the symptoms of CBD vary from case to case depending on which organ it attacks but the symptoms are always accompanied by the effects of the weakened immune system – so colds, 'flu and so on can become complications.

GCS or Genemorphic Compression Syndrome, is thankfully very rare. It seems to be the result of an engineered retrovirus that compresses the chromosomes resulting in some of the most bizarre mutations this side of full aberrancy. The reconfigured genetic structure has a faint taint register – indicating that this bit of – terrorism – is definitely the work of an aberrant. The symptoms are large-scale mutation of the flesh, blood and even skeletal

- structure. The reconfiguration often results in
- vastly more muscle tissue and a hyperactive adrenal gland – leading to vastly increased strength as well as severe irritability and
- an initial susceptibility to suggestion as the brain chemistry re-organizes. GCS is the
- result of contact, injection, or consumption of items tainted by certain aberrants. The
- prognosis in the case of early detection – 24 hours or less is very good. The lotrosis
- anti-toxin mode can neutralize the retrovirus completely. Between 24 and 48 hours, a full
- recovery is still possible – especially in the case of Psions who are somewhat resistant to the disease. Beyond 48 hours mutations and
- personality loss appear permanent – although we are working on our own psi-based retrovirus to reverse this. Early symptoms to
- look out for are spasms and dizzy spells in otherwise healthy subjects. GCS has one
- other unique characteristic. Whilst Psions are almost completely immune to the other diseases, Psions who are injected with or who
- inject GCS tend to suffer and die rather than transforming into sub aberrants.

- Our challenge as physicians, Psion and Normal alike, is to step up and face the horror of these challenges. Humanity depends on each of us to be strong and to find it within ourselves to overcome these diseases. With your help I fervently believe that we shall!

- All right. Thank you. I will now take questions from the audience.

- (applause)

-

-

-

-

-

-

-

-

-

>>> file ends <<<

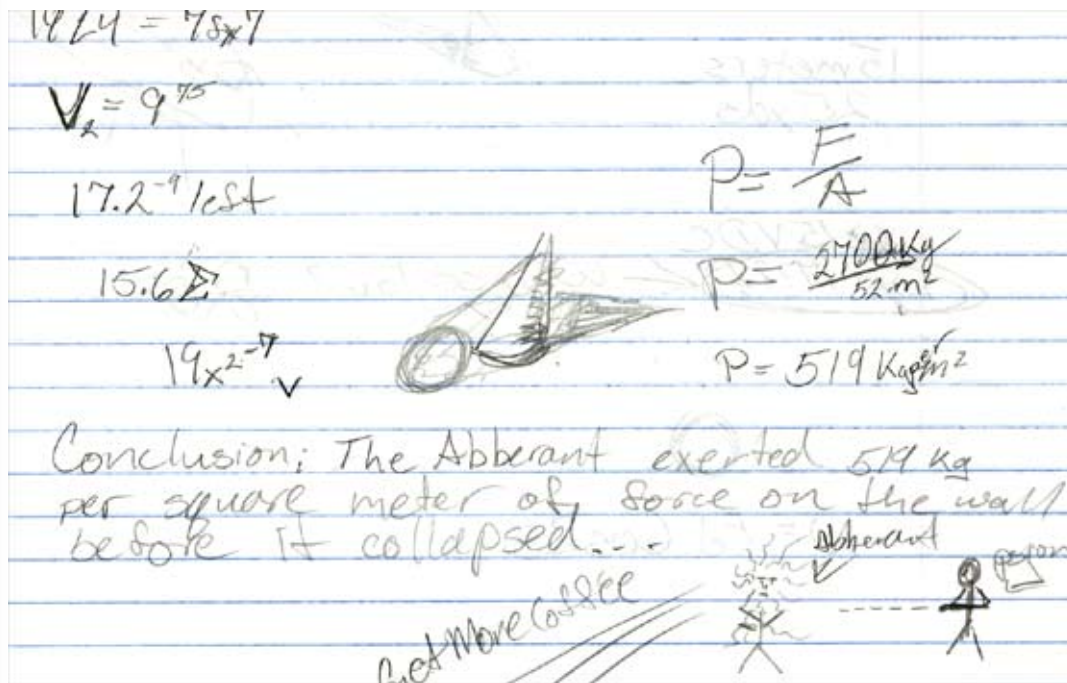
Subject: It worked!
From: Adria >>>data lost<<<
To: >>>data lost<<< go
Encryption: DSE
Transmission type: textfile
Date: 15:20:32 12.29.2122

It worked! Your h >>>data lost<<< he money! Who would have thought that the M-R node could be overloaded with lotrosic energy of all >>>data lost<<< ense from the point of view that the M-R Node is a very new genetic development and would go into shock should >>>data lost<<< regenerate. On top of which the node is both cut off from >>>data lost<<< e psi surge and forced to use its reserves to rest >>>data lost<<< um template at the points of attack.

By striking at least four of the node's filament end points and the node itself I was able t >>>data lost<<< approaching three seconds. Of course, trying this on Novas that tried to resist wou >>>data lost<<< maximum range that I could accomplish the feat was under three mete >>>data lost<<< ast ditch method of defence... Bioware enhancement we may >>>data lost<<< is further...

As it stands I doubt that more than ten fellow docs have the skills to pull this off >>>data lost<<< half of those have the cajones for it.

AG





Classification: 6th Tier
Importance: Priority
Mission Officer: Kapteeni
Malin Andersson, 6th Legion
Chain Commander: Ms. Mossalo
Encryption: DSE
Operation: Tamarika K. Psion Hunt
Theatre: Europe | Southern
France | Near Toulouse
Date: 03.01.2103

I regret to inform you that we have not yet located the alleged proto-psion Tamarika K. Although we have been in the operational area for one week beyond the mission's kill date, I believe that we are making definite progress and request that more time and resources be dedicated to this project.

Yesterday we found a scavenger group that seems to have recently converted to the new faith of T.K. Apparently she passed through the region less than a week ago. Importantly – several of the scavengers actually saw her performing tasks requiring both a fair degree of vitakinesis as well as telekinesis. Jr Lieutenant Kumalo, our telepath, confirms the sighting – See attached scan file. Lt Kumalo also seems to think that the scavengers have been stirred up in their fervor by powerful but extremely subtle Empathy effects. The locals certainly seem to think that she is some sort of holy figure.

In the vision-scan she is clearly preaching of the coming of 'One far greater than she' and backing it up with the healing of the sick. Given the state of France, and the willingness of the locals to accept any speck of hope that they are offered, the comparison to the holy prophets cannot be avoided. Still, personally, the only thing that I can think of that is more powerful than a Psion skilled in more than one aptitude is an aberrant.

Please advise.

>>>Attached File: JrLieutenantKumalo.3rdLegion.Scanfile<<<



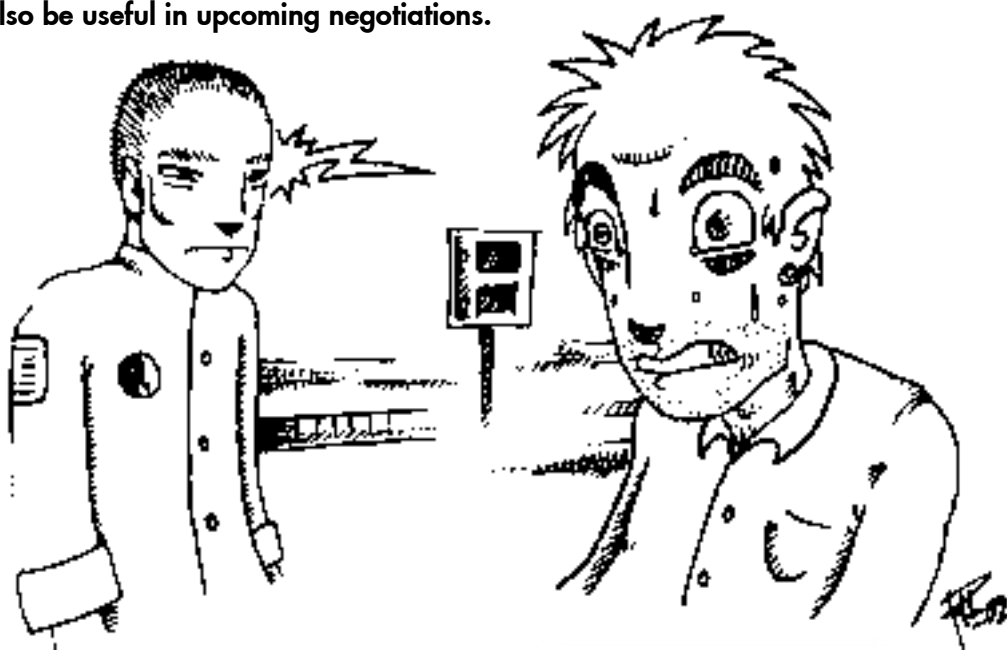
>>> 57 bytes of header lost <<<

Thank you, Brother, your suggested meditation technique did indeed save my life. Thanks to you I was able to withstand the pain of the directed backlash. I am both sad in my heart that the rogues are no more, and grateful – even glad – that few others must suffer the pain that I have suffered.

I have removed the dark cloth... for now.

– **Triton Report:** Attached message appears to be real. Most likely generator would be an Al Alif clairsentient. Best guess: a rogue Chitra Bhanu has/had developed the capacity to create focused backlash by violent manipulation of the medium. This means that the quantikinetics have the ability to work on a much wider meta-plane of psi manipulation than we previously believed.

– **Suggested course:** In light of recent events, Omega level Athena team backed by a Noeticist should be assigned to investigate immediately. The mentioned meditation techniques could also be useful in upcoming negotiations.



| >> CONFIDENTIAL << | >> CONFIDENTIAL << |
|--|---|
| <p>Subject: All changes are in place From: Whitley To: Max Encryption: RPH/X9 Date: 00.00.12 21.3.2123</p> <p>How long before psi forms start emerging? Is there enough time?</p> | <p>Subject: Re: All changes are in place From: Max To: Whitley Encryption: RPH/X9 Date: 00.00.12 21.3.2123</p> <p>Its going to be close this time around.</p> <p>I need to visit the prophet. She's waiting for me.</p> <p>Prepare the most likely candidates. Just in case.</p> |



ADVENTURE!

THE END OF AN ERA

With the Roaring 20's behind us, and the desperation of the Depression fresh in the minds of people everywhere, the nations of the world draw into the chaos of another Great War. Now is the time for new heroes to emerge. Now is the time for sleeping giants to wake. Now is the time for the Greatest Generation to be born, but first it must survive it's...

TRIAL BY FIRE

Adventure! Trial by Fire: an expansion and world update for the wildly successful Adventure! Role-playing game. This book will take you to the last days of the Pulp Era and walk you through the weirder side of World War II.

- General Information on the world of the 1940's
- Updates on Individuals and organizations
- New Super Science and Gadgetry
- New Heroes and Villains
- The Birth of a New Foe in the Form of an Old Friend
- Merits and Flaws
- New Knacks



TRIAL BY FIRE

EOD



India Underground

PSI ORDER CHITRA BHANU & BHARATI COMMONWEALTH SOURCEBOOK



The Chitra Bhanu

Those rare psions gifted with the most remarkable of abilities

The ability to control the very fabric of the universe

They seemed to be the most powerful, shining beacons of defense for humanity

Until they themselves fell to the Aberrants dark pursuits

... or did they?

EON

<http://www.chill.uk.net/eon>



Subject: Noetic Science
From: Æon Trinity, Neptune Division
To: All Æon operatives
Transmission type: textfile
Encryption: DSE

Scientific Advancement

In the 22nd Century humanity has discovered the very building blocks of life – Psi and Quanta. Armed with the ability to tap into these forces the Orders bravely stand in defense of Earth. But how does it all work? With centuries of scientific leadership to draw upon, the Æon Trinity, in conjunction with the Orders, delves deep into the subquantum universe to understand how life itself is created, and perhaps develop new tools along the way.

Untold Potential

Trinity Field Report: Noetic Science is the seventh subject briefing from the Æon Trinity for its operatives and associates. It provides a summary of the young field of Noetics and brings to light recent discoveries and the latest advances. Additionally, this dossier includes information relating to bioware function, and current theories on taint and aberrancy.

The logo for Æon, featuring the word "ÆON" in a stylized, metallic, blue and silver font.

<http://www.chill.uk.net/eon>

The logo for Trinity Field Report Noetic Science, featuring the words "TRINITY FIELD REPORT" in a green, blocky font, with "noetic science" in a smaller, green font below it.

A fanfic sourcebook for the Trinity RPG