

DUNGEONLANDS



TOMB OF THE
 LICH QUEEN 
ENCOUNTER CARDS

DISCLAIMER

Our legal department requires we add this: Repeat after us, "I am not my character. I cannot do the things that my character can do because he is a fictional character in a fictional universe." In other words, do not do anything that might be dangerous to yourself or others. Roleplaying is meant to be fun.

We'd also like to explain that Suzerain is our take on reality with mythological and magical elements. It depicts religions and mythologies with a twist – that is to say, differently than a true believer might see them. We mean no disrespect if you are such a believer but ask you to respect our right to our own interpretation.

CREDIT WHERE CREDIT'S DUE

Illustrations: Mike Chaney, James Denton, Jason Engle, Jim Pavelec, Alida Saxon.

Design: Aaron Acevedo.

Layout: Mike Chaney.



This document is copyright Savage Mojo Ltd 2013. All rights reserved. It is for personal use only, and may be printed for personal use. It may not be modified, distributed or sold without written permission.

version1.130505

Monster



Monster



Monster



Monster



Monster



Monster



Monster



Monster



Monster





DEMI-OGRE



BRUTAL OGRE



**ORK
COMMANDER**



SPIDER KEEPER



DESTINY BEAST



DOG WITCH



SPIDER HOUND



FUNGUS HOST



RHINO SLUG

Monster



Monster



Monster



Monster



Monster



Monster



Monster



Monster



Monster





BAT URCHIN



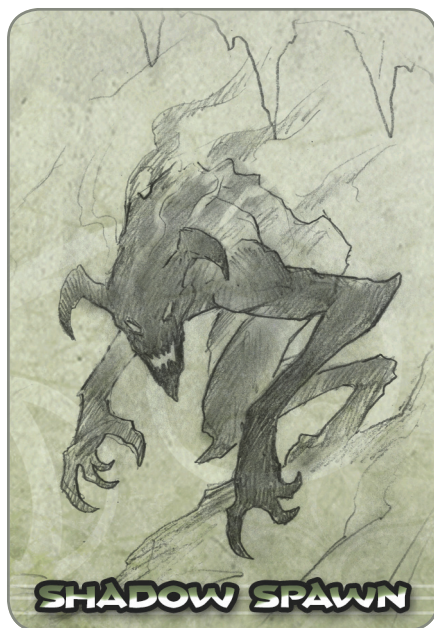
Z'UDJ



RECLAIMER



ROLLER



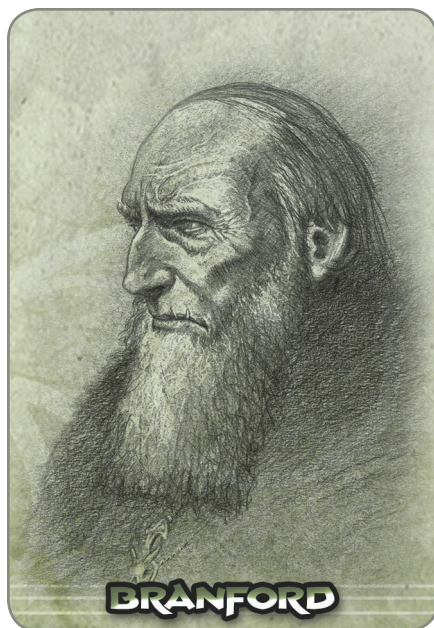
SHADOW SPAWN



ORK CAPTAIN



ORK



BRANFORD



ENGEL

Monster



Monster



Monster



Monster



Monster



Monster



Monster

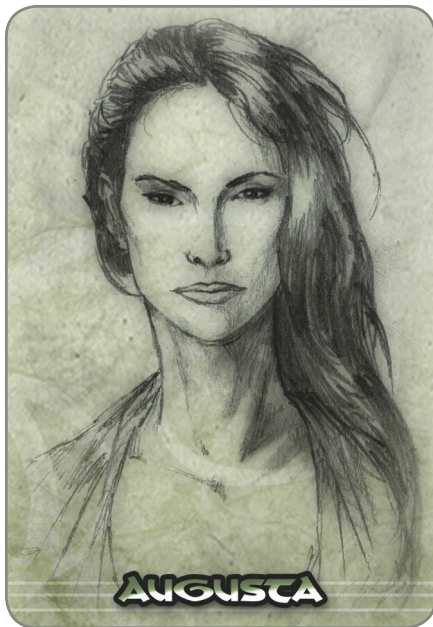


Monster

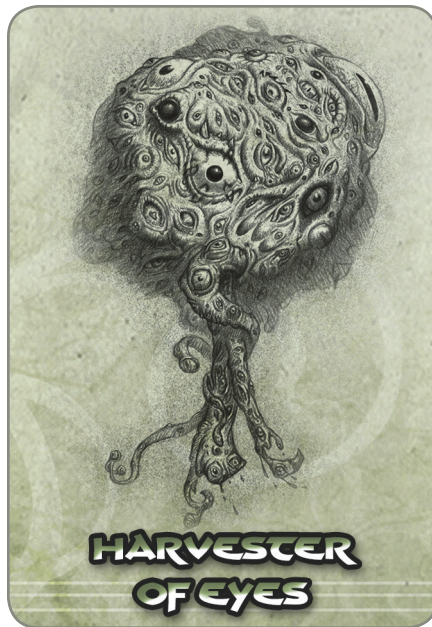


Monster





AUGUSTA



**HARVESTER
OF EYES**



SIDAN



DEVOURER



**HEADLESS
HORROR**



VOIDSTRIDER



HIAN



ALSEP



VERGER

Monster



Monster



Monster



Monster



Monster



Monster



Monster



Monster



Monster





DEMONLINGS



GHOUL



LICH VESSEL



SPECTRAL KING



THE CRONE



MULCIMBER



TOMB SPIDER



**MONSTROUS
CENTIPEDES**



SLIME

